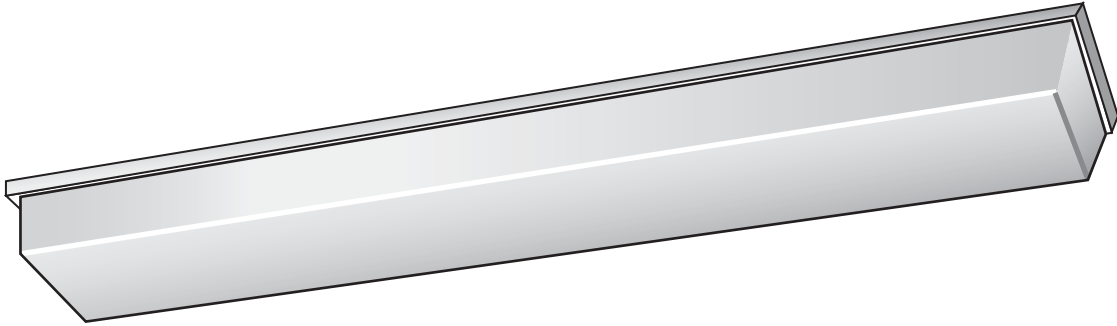


Commercial Fixture Series CV800



Application

The ideal fixture for vandal resistant high abuse installations.

FEATURES & SPECIFICATIONS

Attributes

A wrap around fluorescent fixture designed for parking garages, school corridors or any application where high abuse or vandalism could occur.

Construction

Back plate is die formed of 16 gauge steel. Lens attached to back plate with tamper resistant stainless steel screws.

Diffuser

Diffuser is made of injection molded UV stabilized 100% clear, polycarbonate with an internal prismatic pattern.

Mounting

Units may be surface or wall mounted.

Electrical

Unless otherwise specified, ballasts are rapid start, class "P" thermally protected, H.P.F., CBM-ETL. Optional ballasts available include: energy saving (ESB), electronic (ELB), dimming (DIM), low temperature (CW). Standard voltage on all fixtures is 120V 60HZ AC, or as specified. Sufficient knockouts are provided on the back for all connections and through wiring.

Listing

Fixtures conform to Underwriters' Laboratories standards for production and are carefully tested prior to packing. Fixtures are U.L. listed wet location for ceiling and damp location for wall mounting.

(972) 247-3171

Factory/Warehouse • 2055 Luna Road • Suite 142 • Carrollton, TX 75006

(972) 247-3171 Phone • (972) 247-0200 Fax

Email sales@texasfluorecents.com

Look For Complete Internet Catalog • www.texasfluorecents.com

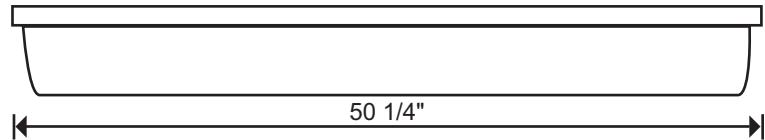
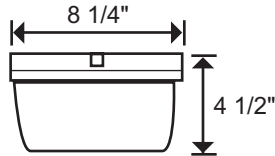


TEXAS

FLUORESCENTS

Commercial Fixture Series CV800

DIMENSIONS



ORDERING INFORMATION

SERIES CV800			ELECTRONIC	
<u>Part Number</u>	<u>Bulb</u>	<u>Size</u>	<u>Part Number</u>	<u>Bulb</u>
CV800-240	2-F40T12	8-1/4" X 50-1/4" X 4-1/2"	CV800-232	2-F32T8

(972) 247-3171

Factory/Warehouse • 2055 Luna Road • Suite 142 • Carrollton, TX 75006

(972) 247-3171 Phone • (972) 247-0200 Fax

Email sales@texasfluorescents.com

Look For Complete Internet Catalog • www.texasfluorescents.com