

FLUORESCENT STRIPS

Texas Fluorescents offers all strip sizes, from subminiature to wide, carrying all common T12, T8, and T5 linear lamps. Tandem lengths are offered on most strip series.

Available in many different sizes such as:

	Style	Lamping	Size (W x H)
DED Series	Sub Miniature	T5	0.88" x 1.69"
MS Series	Micro	T5	1.38" x 1.38"
KDS Series	Mini	T5	1.63" x 1.38"
S & SE Series	Narrow	T12, T8, & T5	2.75" x 2.0"
C Series	Medium	T12, T8, & T5	4.25" x 2.0"
K Series	Deep	T12 & T8	4.75" x 2.88"
CH Series	Wide	T12 & T8	8.63" x 2.88"



Many different lamp configurations to fit all your lighting needs:

SIDEMOUNT STRIPS

KDSM Series
SM Series

STAGGERED STRIPS

STGKD Series
ST1 Series
ST2 Series
TSSKD Series



Sidemounts



Staggered Strips

Side mount and staggered lamp configurations complete the offering. Texas Fluorescents stock components to create special lamp orientation to meet all mounting requirements.

Many different styles of reflectors to choose from:

MS Series
KDS Series
S Series
IND Series
KL Series



IND Series



KL Series

Strips may be customized with reflectors fabricated in white steel for rugged applications, and high reflectance while aluminum or mirrored materials for high efficiency. Several lighting distributions are available. See Page 48 for reflector ordering information.

Cove Lighting Strips - NEW!:

CCFS Series is available in a variety of PL Lamps to perfectly and evenly illuminate any cove regardless of size and shape.



CCFS Series

MORE LIGHT. ON DEMAND. FULL ACCESSORIZED OR ECONOMY MODELS.

Texas Fluorescents offers an array of fluorescent strips suitable for the efficiency demands of today's markets. Choose from many different options, and accessorize to meet your specifications.

REPLACE METAL HALIDE HIGH BAYS AND STOP WORKING IN THE DARK.

Fluorescent strips provide instant on / off, White light, and better color rendition in an efficient lighting package. Save money. Reduce CO2 emissions.

SEE THE DIFFERENCE.

FLUORESCENT STRIPS

S Series - 1 Light Strip



Ideal With
Premium
Performance
Options
(see page 44)

Narrow body one lamp strip. Available for use with T12, T8 or T5. Consult factory for lamp configurations and sizes not shown.

ITEM NO.	SIZE (L x W x H)	LAMPING
S115E120	18" x 2.75" x 1.8"	1-F15T8
S117MV	24" x 2.75" x 1.8"	1-F17T8
S117S	24" x 2.75" x 1.8"	1-F17T8
S125S	36" x 2.75" x 1.8"	1-F25T8
S125MV	36" x 2.75" x 1.8"	1-F25T8
S1256MV	72" x 2.75" x 1.8"	2-F25T8
S132S	48" x 2.75" x 1.8"	1-F32T8
S132MV	48" x 2.75" x 1.8"	1-F32T8
S1328S	96" x 2.75" x 1.8"	2-F32T8
S1328MV	96" x 2.75" x 1.8"	2-F32T8
S24AS	24" Asymmetrical Reflector	
S24S	24" Symmetrical Reflector	
S48AS	48" Asymmetrical Reflector	
S48S	48" Symmetrical Reflector	

See page 48, for reflectors and other options to use with these fixtures.

C Series - 1, 2 or 3 Light Strips



Ideal With
Premium
Performance
Options
(see page 44)

Available for use with T12, T8 or T5. Consult factory for lamp configurations and sizes not shown.

ITEM NO.	SIZE (L x W x H)	LAMPING
C217S	24" x 4.25" x 3.75"	2-F17T8
C217MV	24" x 4.25" x 3.75"	2-F17T8
C225S	36" x 4.25" x 3.75"	2-F25T8
C225MV	36" x 4.25" x 3.75"	2-F25T8
C2256MV	72" x 4.25" x 3.75"	4-F25T8
C230M120	36" x 4.25" x 3.75"	2-F30T12
C232S	48" x 4.25" x 3.75"	2-F32T8
C232MV	48" x 4.25" x 3.75"	2-F32T8
C2328S	96" x 4.25" x 3.75"	4-F32T8
C2328MV	96" x 4.25" x 3.75"	4-F32T8
C240M120	48" x 4.25" x 3.75"	2-F34T12
C254MV	48" x 4.25" x 3.75"	2-F54T5HO
C2548MV	96" x 4.25" x 3.75"	4-F54T5HO
C354MV	48" x 4.25" x 3.75"	3-F54T5HO
C3548MV	96" x 4.25" x 3.75"	6-F54T5HO
C259MV	96" x 4.25" x 3.75"	2-F59(96)T8
C248T8HOE120	48" x 4.25" x 3.75"	2-F48T8HO
C248T8HO8E120	48" x 4.25" x 3.75"	4-F48T8HO
C296T8HOE120	96" x 4.25" x 3.75"	2-F96T8HO
C296T12E120	96" x 4.25" x 3.75"	2-F96T12
C296T12HOE120	96" x 4.25" x 3.75"	2-F96T12HO
C48CA	48" Asymmetrical Reflector	
C48CS	48" Symmetrical Reflector	
C48WG	48" Wire Guard	

See page 48, for reflectors and other options to use with these fixtures.

Narrow Body Strip



Ideal With
Premium
Performance
Options
(see page 44)

For tight spaces requiring two lamps or a more economical version than the standard lamp strip. Choice of reflectors. Available in T8 or T5 lamping. Consult factory for other lamping options.

ITEM NO.	SIZE (L x W x H)	LAMPING
SE215S	18" x 2.75" x 1.8"	2-F15T8
SE215E120	18" x 2.75" x 1.8"	2-F15T8
SE217S	24" x 2.75" x 1.8"	2-F17T8
SE217MV	24" x 2.75" x 1.8"	2-F17T8
SE225S	36" x 2.75" x 1.8"	2-F25T8
SE225MV	36" x 2.75" x 1.8"	2-F25T8
SE232S	48" x 2.75" x 1.8"	2-F32T8
SE232MV	48" x 2.75" x 1.8"	2-F32T8
SE224MV	24" x 2.75" x 1.8"	2-F24T5HO
SE239MV	36" x 2.75" x 1.8"	2-F39T5HO
SE254MV	48" x 2.75" x 1.8"	2-F54T5HO

Reflector Options as follows - "W30" - White Steel Reflector Standard Mount, "W35" - White Steel Asymmetrical Reflector, "M20" - Mirrored Reflector Standard Mount.

FLUORESCENT STRIPS

Mini Body T5 Strip



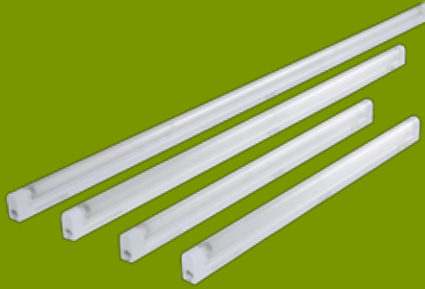
See Page 48 for reflector options.

For size critical applications such as display cabinets, coves, and other indirect lighting applications, these specification grade T5 strips provide lots of light. Choice of T5 and T5HO lamps and ballasts to provide up to 70% more light output. T5 lamps come in 46", 34", and 22" lengths to fit into standard size furniture. Available with a variety of reflectors.

ITEM NO.	SIZE (L x W x H)	LAMPING
KDS114MV	21.6" x 1.6" x 1.6"	1-F14T5
KDS114M20MV	21.6" x 5.4" x 3.4"	1-F14T5
KDS124MV	21.6" x 1.6" x 1.6"	1-F24T5HO
KDS124M20MV	21.6" x 5.4" x 3.4"	1-F24T5HO
KDS121MV	33.3" x 1.6" x 1.6"	1-F21T5
KDS121M20MV	33.3" x 5.4" x 3.4"	1-F21T5
KDS139MV	33.3" x 1.6" x 1.6"	1-F39T5HO
KDS139M20MV	33.3" x 5.4" x 3.4"	1-F39T5HO
KDS128MV	45.3" x 1.6" x 1.6"	1-F28T5
KDS128M20MV	45.3" x 5.4" x 3.4"	1-F28T5
KDS154MV	45.3" x 1.6" x 1.6"	1-F54T5HO
KDS154M20MV	45.3" x 5.4" x 3.4"	1-F54T5HO
KDS135MV	59.1" x 1.6" x 1.6"	1-F35T5
KDS180MV	59.1" x 1.6" x 1.6"	1-F80T5HO

Reflector Options - "W30" - White Steel Reflector Standard Mount, "W35" - White Steel Asymmetrical Reflector, "M20" - Mirrored Reflector Standard Mount, "M25" - Mirrored Reflector Asymmetric.

Linked Sub-Mini Strip



Sub-miniature metal strip with acrylic diffuser to illuminate tight spaces. Ideal for display and shelf lighting. Fixtures may be used individually, or linked, end to end without cords. Joiner cords are available to go around corners or impediments. Comes with cord and plug. Hardwire box accessory is an option.

ITEM NO.	SIZE (L x W x H)	LAMPING
DED108LN41 (DED/T58)	13" x 0.9" x 1.7"	1-F8T5
DED113LN41 (DED/T513)	22.5" x 0.9" x 1.7"	1-F13T5
DED114LN41 (DED/T514)	23.7" x 0.9" x 1.7"	1-F14T5
DED121LN41 (DED/T521)	35.6" x 0.9" x 1.7"	1-F21T5
DED128LN41 (DED/T528)	47.4" x 0.9" x 1.7"	1-F28T5
DED6JOIN (DED/6JOIN)	6" Cord	
DED12JOIN (DED/12JOIN)	12" cord	
DED18JOIN (DED/18JOIN)	18" Cord	
DED24JOIN (DED/24JOIN)	24" Cord	
DEDJBOX	J Box for Hardware	

Side Mount Strips



2 Lamp

Specification grade side mount fixtures for T8 or T12 lamps. For other configurations or lampings consult factory.

ITEM NO.	SIZE (L x W x H)	LAMPING
SM115E120	18" x 2.75" x 1.8"	1-F15T8
SM117MV	24" x 2.75" x 1.8"	1-F17T8
SM125MV	36" x 2.75" x 1.8"	1-F25T8
SM132MV	48" x 2.75" x 1.8"	1-F32T8
SM217MV	24" x 2.75" x 1.8"	2-F17T8
SM225MV	36" x 2.75" x 1.8"	2-F25T8
SM232MV	48" x 2.75" x 1.8"	2-F32T8

See page 48 for reflectors and other options to use with these fixtures.

Consult factory for 3 Light Versions.

Mini Body Side Mount Strip



Small size, flexibility and lots of light distinguish this series which is ideal for display cases, coves and other tight spaces. Choose either 2 or 3 lamp configurations using all T5 lamps and sizes. Consult factory for configurations not listed.

ITEM NO.	SIZE (L x W x H)	LAMPING
KDSDSM214MV	21.6" x 1.6" x 1.6"	2-F14T5
KDSM224MV	21.6" x 1.6" x 1.6"	2-F24T5HO
KDSDSM321MV	33.3" x 1.6" x 1.6"	3-F21T5
KDSM239MV	33.3" x 1.6" x 1.6"	2-F39T5HO
KDSDSM228MV	45.3" x 1.6" x 1.6"	2-F28T5
KDSM328MV	45.3" x 1.6" x 1.6"	3-F28T5
KDSM254MV	45.3" x 1.6" x 1.6"	2-F54T5HO
KDSDSM235MV	59.1" x 1.6" x 1.6"	2-F35T5
KDSM354MV	45.3" x 1.6" x 1.6"	3-F54T5HO
KDSM280MV	59.1" x 2.0" x 1.6"	2-F80T5HO

Consult factory for 1 Light Version.

FLUORESCENT STRIPS

Staggered Strip One lamp T8



Specification grade, single lamp (and Tandem) strip for interior coves, valences and displays requiring smooth shadowless lighting even at the ends.

ITEM NO.	SIZE (L x W x H)	LAMPING
ST117MV	24" x 4.25" x 2"	1-F17T8
ST125MV	36" x 4.25" x 2"	1-F25T8
ST132MV	48" x 4.25" x 2"	1-F32T8
ST1328MV	93" x 4.25" x 2"	2-F32T8

Staggered Strip Two Lamp T8



Specification grade, dual lamp (and Tandem) staggered strip for interior coves, valences and displays requiring smooth shadowless lighting even at the ends.

ITEM NO.	SIZE (L x W x H)	LAMPING
ST217MV	29" x 4.25" x 2"	2-F17T8
ST225MV	39" x 4.25" x 2"	2-F25T8
ST2256MV	75" x 4.25" x 2"	4-F25T8
ST232MV	51" x 4.25" x 2"	2-F32T8
ST2328MV	99" x 4.25" x 2"	4-F32T8

Staggered Strip One Lamp T5



Specification grade, mini body single lamp (and Tandem) staggered strip for interior coves, valences and displays requiring smooth shadowless lighting even at the ends. Consult factory for other sizes and lampings including T8.

ITEM NO.	SIZE (L x W x H)	LAMPING
STGKD114MV	21.6" x 3.1" x 1.4"	1-F14T5
STGKD124MV	21.6" x 3.1" x 1.4"	1-F24T5HO
STGKD121MV	33.3" x 3.1" x 1.4"	1-F21T5
STGKD139MV	33.3" x 3.1" x 1.4"	1-F39T5HO
STGKD128MV	46.3" x 3.1" x 1.4"	1-F28T5
STGKD154MV	46.3" x 3.1" x 1.4"	1-F54T5HO

Staggered Strip Two Lamp T5



Specification grade, mini body dual lamp (and Tandem) staggered strip for interior coves, valences and displays requiring smooth shadowless lighting even at the ends. Consult factory for other sizes and lampings including T8.

ITEM NO.	SIZE (L x W x H)	LAMPING
STGKD214MV	26.5" x 3.1" x 1.4"	2-F14T5
STGKD224MV	26.5" x 3.1" x 1.4"	2-F24T5HO
STGKD221MV	38.25" x 3.1" x 1.4"	2-F21T5
STGKD239MV	38.25" x 3.1" x 1.4"	2-F39T5HO
STGKD228MV	50" x 3.1" x 1.4"	2-F28T5
STGKD254MV	50" x 3.1" x 1.4"	2-F54T5HO

Telescopic Staggered Strip Two Lamp T5



Fixture telescopes to maintain uniform distribution of light in end-of-row applications. Consult factory for other sizes and lampings including T8.

ITEM NO.	SIZE (L x W x H)	LAMPING
TSSKD214MV	26.5" x 3.1" x 1.4"	2-F14T5
TSSKD224MV	26.5" x 3.1" x 1.4"	2-F24T5HO
TSSKD221MV	38.25" x 3.1" x 1.4"	2-F21T5
TSSKD239MV	38.25" x 3.1" x 1.4"	2-F39T5HO
TSSKD228MV	50" x 3.1" x 1.4"	2-F28T5
TSSKD254MV	50" x 3.1" x 1.4"	2-F54T5HO

PL Cove Lighting



Overlapping lamps for shadow-free light at close distances from illuminated surfaces is ideal for curved spaces. Consult Specification Sheet for full lamp selection and spacing.

ITEM NO.	SIZE (L x W x H)	LAMPING
CCFS134E120	4" x 3.25" x 2"	1-F13BX
CCFS189E120	9" x 3.25" x 2"	1-F18BX
CCFS2711E120	11" x 3.25" x 2"	1-F27BX
CCFS3915E120	15" x 3.25" x 2"	1-F39BX

FLUORESCENT STRIPS

Wide Body Strip



Ideal With
Premium
Performance
Options
(see page 44)

Wider strip allows three or four lamps for higher illumination applications.

ITEM NO.	SIZE (L x W x H)	LAMPING
CH232MV	48" x 8.6" x 2.5"	2-F32T8
CH332MV	48" x 8.6" x 2.5"	3-F32T8
CH432MV	48" x 8.6" x 2.5"	4-F32T8
CH359MV	96" x 8.6" x 2.5"	3-F59(96)T8
CH459MV	96" x 8.6" x 2.5"	4-F59(96)T8
CH348T8HOE120	48" x 8.6" x 2.5"	3-F48T8HO
CH448T8HOE120	48" x 8.6" x 2.5"	4-F48T8HO
CH396T8HOE120	96" x 8.6" x 2.5"	3-F96T8HO
CH496T8HOE120	96" x 8.6" x 2.5"	4-F96T8HO
CH396T12E120	96" x 8.6" x 2.5"	3-F96T12
CH496T12E120	96" x 8.6" x 2.5"	4-F96T12
CH396T12HOE120	96" x 8.6" x 2.5"	3-F96T12HO
CH496T12HOE120	96" x 8.6" x 2.5"	4-F96T12HO

See page 48 for reflectors and other options to use with these fixtures.

Deep Body Strip



Ideal With
Premium
Performance
Options
(see page 44)

Heavy duty specification grade, deep body strip for warehouse and industrial applications. Great for Pendant mounting on chain or stems.

ITEM NO.	SIZE (L x W x H)	LAMPING
K232MV	48" x 4.25" x 2.5"	2-F32T8
K2328MV	96" x 4.25" x 2.5"	4-F32T8
K240E120	48" x 4.25" x 2.5"	2-F34T12
K240E120	96" x 4.25" x 2.5"	4-F34T12
K259MV	96" x 4.25" x 2.5"	2-F59(96)T8
K248T8HOE120	48" x 4.25" x 2.5"	2-F48T8HO
K296T8HOE120	96" x 4.25" x 2.5"	2-F96T8HO
K296T12E120	96" x 4.25" x 2.5"	2-F96T12
K296T12HOE120	96" x 4.25" x 2.5"	2-F96T12HO

Industrial Strip with Reflectors



Available with mirrored reflector for more concentrated light output. Economical choice for warehouse applications. See page 48 for reflector options.

Medium body industrial strip with reflectors for interior warehouse, retail and utility areas requiring concentrated illumination in a commercial quality configuration. Choose from a variety of reflectors with one right for your application.

ITEM NO.	SIZE (L x W x H)	LAMPING
IND232W30MV	48"x10.25"x4.2"	2-F32T8
IND2328W30MV	96"x10.25"x4.2"	4-F32T8
IND254W30MV	48"x10.25"x4.2"	2-F54T5HO
IND2548W30MV	96"x10.25"x4.2"	4-F54T5HO
IND354W30MV	48"x10.25"x4.2"	3-F54T5HO
IND3548W30MV	96"x10.25"x4.2"	6-F54T5HO
IND259W30MV	96"x10.25"x4.2"	2-F59(96)T8
IND296T8HOW30MV	96"x10.25"x4.2"	2-F96T8HO
IND296T12W30MV	96"x10.25"x4.2"	2-F96T12
IND296T12HOW30MV	96"x10.25"x4.2"	2-F96T12HO
IND48WG	48" Wire Guard	

Reflector Options: "W30" - White Steel Reflector Standard Mount, "W30UP" - White Steel Reflector Uplight, "W35" - White Steel Asymmetrical Reflector, "M22" - Mirrored Reflector Low Mount, "M24" - Mirrored Reflector Standard Mount, "M25" - Mirrored Reflector Asymmetric, "M26" - Mirrored Reflector High Mount.

Specification Industrial



Heavy duty, specification grade deep body industrial strip with embossed steel reflectors for interior warehouse, retail and utility areas requiring extra rugged fixtures and illumination.

ITEM NO.	SIZE (L x W x H)	LAMPING
KL232W30MV	48" x 13" x 5.25"	2-F32T8
KL2328W30MV	96" x 13" x 5.25"	4-F32T8
KL332W30MV	48" x 13" x 6"	3-F32T8
KL3328W30MV	96" x 13" x 6"	6-F32T8
KL432W30MV	48" x 13" x 6"	4-F32T8
KL4328W30MV	96" x 13" x 6"	8-F32T8
KL259W30MV*	96" x 13" x 5.25"	2-F59(96)T8
KL296T8HOW30E120*	96" x 13" x 5.25"	2-F96T8HO
KL296T12W30E120*	96" x 13" x 5.25"	2-F96T12
KL296T12HOW30E120	96" x 13" x 5.25"	2-F96T12HO
KL48WG	48" Wire Guard	

* For 4 Light change KL2 to KL4.