

Full Cut-Off Wall Packs

DCC150, DCC200, DC250

FEATURES & SPECIFICATIONS

- Tempered Clear Glass Lens
- Die Cast Hinged Front & Rear Housings, Gasket, Coin Plugs on Sides and Back.
- Built-In Template for Mounting to Electrical Box
- Chromate Conversion Coating
- Textured Bronxe Finish
- Two Piece Hinged Aluminum Reflector
- Porcelain Socket & Bracket
- Meets Local “Dark Sky” Requirements
- Excellent for Use as an Uplight



DARK SKY

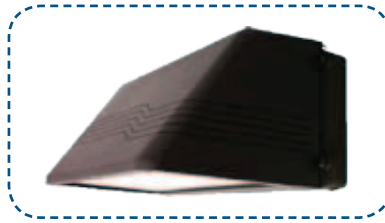
ORDERING INFORMATION

EX: DCC150-250HPS-MT-LP

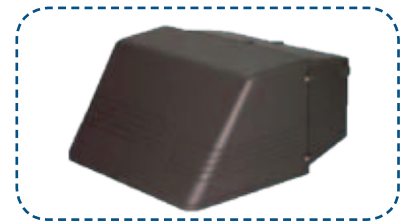
Series	Wattage	Bulb Type	Ballast & Voltage	Lamp
DCC150	150	HPS (High Pressure Sodium)	MT (Multi-Tap)	LP
DCC150	175	MH (Metal Halide)	MT (Multi-Tap)	LP
DCC150	2PL42	Plug-In Fluorescent	MV (Multi-Volt)	LP
DCC200	250	HPS (High Pressure Sodium)	MT (Multi-Tap)	LP
DCC200	250	MH (Metal Halide)	MT (Multi-Tap)	LP
DCC200	250	PSMH (Pulse Start Metal Halide)	MT (Multi-Tap)	LP
DCC250	400	HPS (High Pressure Sodium)	MT (Multi-Tap)	LP
DCC250	320	PSMH (Pulse Start Metal Halide)	MT (Multi-Tap)	LP
DCC250	400	PSMH (Pulse Start Metal Halide)	MT (Multi-Tap)	LP
DCC250	400	MH (Metal Halide)	MT (Multi-Tap)	LP



DCC150



DCC200



DCC250