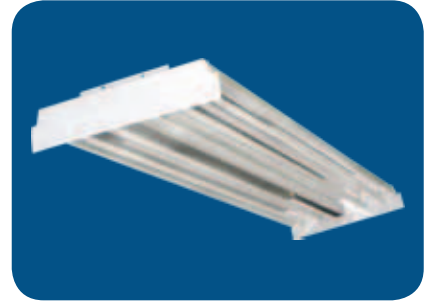


H5L Series

H5L HiBay Wrap



FEATURES & SPECIFICATIONS

INTENDED USE

The H5L series is an economy version of the high bay fluorescent designed especially for high light output. The fixtures uses premium mirrored reflectors for high efficiency lighting. Post painted for superior appearance and appeal, suitable for commercial, retail and industrial applications. Mounts easily with chain.

SIZE W x L x H in inches (mm)

13W x 48L x 3.0Dp

LAMP

4 Lamp Positions

MATERIALS & FEATURES

Baked white enamel code gage steel Premium full specular mirrored reflector Multiple KOs and access plate

MOUNTING

4 Point chain mount (Chain kit included)

LISTING / CERTIFICATIONS

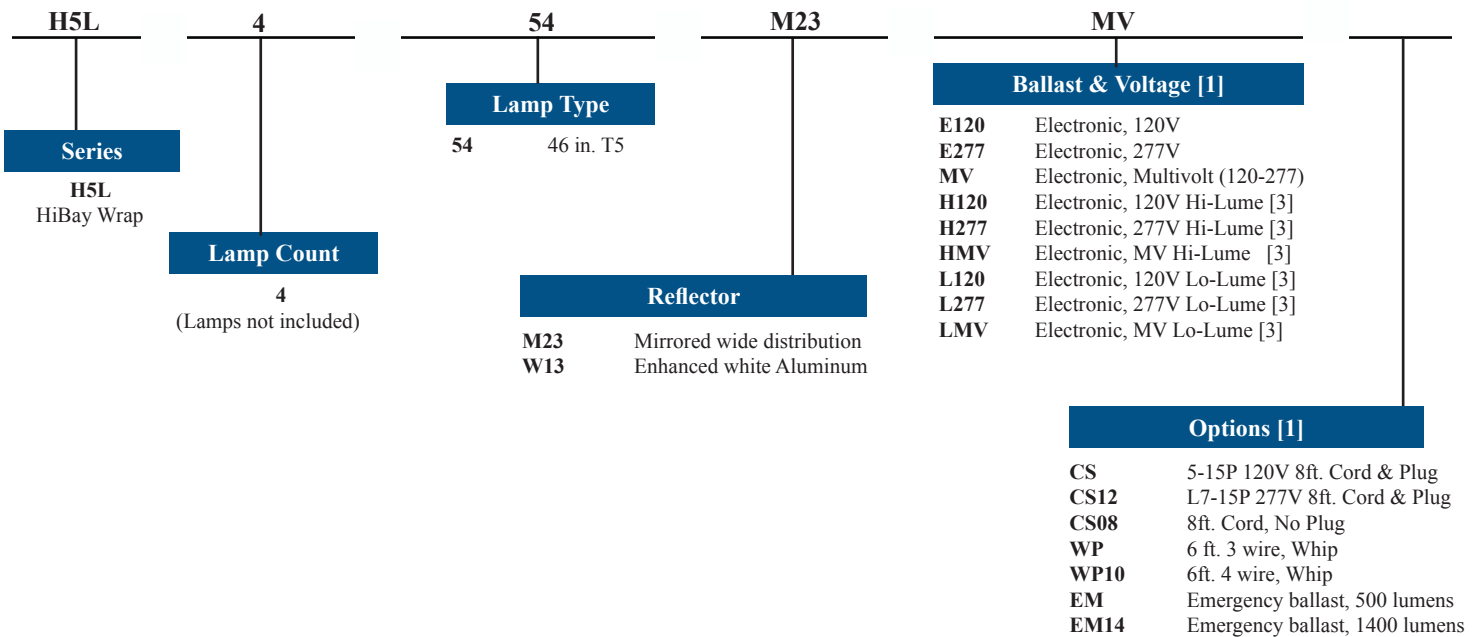
Fixture & Ballast: UL Listed
Ballast: Thermally protected, class P, HPF, Non PCB

TYPICAL OPTIONS AND ACCESSORIES

Emergency ballasts, Cord sets, whips, occupancy sensors Hanging kits, Wire guards. Contact factory for additional options.

ORDERING INFORMATION

Example: **H5L454M23MV**



Note: EM14 required for T5HO lamps

Catalog Number:
Notes:



T02HIBAY **Features & Wiring Options**

Features - Fluorescent HiBays

Description	HBG	HBP	HBPDPF	HB131	HBT	H5L
Lens / Door Frame	N	N	Y	Y	N	N
Wire guard	Y	Y	Y	Y	Y	Y
Cords and plug sets	Y	Y	Y	Y	Y	Y
Whips	Y	Y	Y	Y	Y	Y
Multiple switch levels	Y	Y	Y	Y	Y	Y
Dimming	Y	Y	Y	Y	Y	Y
Emergency ballasts	Y	Y	Y	Y	Y	Y
Occupancy sensors	Y	Y	Y	N	Y	Y
Daylight Sensors	Y	Y	Y	N	Y	Y
Narrow(aisle)distributions	Y	N	N	N	N	Y
Mounting Styles						
Chain + "S"hook [1]	Y	Y	Y	Y	Y	Y
Chain + Tongs	Y	N	N	N	N	N
Cable & cable grips	Y [2]	Y [2]	Y [2]	Y [2]	N	N
Double Stems	Y	Y	Y	N	N	Y
Monopoint (single stem)	Y [3]	Y [3]	Y [3]	N	N	N
Surface	Y	Y	Y	N	N	Y
2x4 Tbar Grid	N	N	N	Y	N	N

Notes

- [1] HBT only includes chain kit. Chain kit accessory available on other units.
 - [2] Cable mount suspension REQUIRES custom factory modification.
 - [3] Monopoint suspension REQUIRES factory supplied accessory.
- Any T8 fixture may carry T5.5 lamps. Contact factory for additional information on this innovative new lamp.

T02HIBAY Wiring Options - Availability Matrix

DESCRIPTION		HBG	HBP	HBPDPF	HB131	HBT	HBN	Append to catalog No.	
6ft whip, 3 wire, 18ga		All	All	All	All	All	All	WP	
6ft whip, 4 wire, 18ga		All	All	All	All	All	All	WP10	
6 ft. whip, 5 wire, 18ga		All	All	All	All	All	All	WP12	
8ft cord&plug 18ga, 5-15P	[1,2]	All	All	All	All	All	All	CS	or CSB,CSW
8ft cord&plug 18ga, L7-15P	[1,2]	All	All	All	All	All	All	CS12	or CSB12,CSW12
8ft cord,(3) 18ga, no plug	[2]	All	All	All	All	All	All	CS08	
12ft cord&plug 18ga, 5-15P	[1,2]	All	All	All	All	All	All	CS11	
8ft cord&plug 18ga, L7-15P	[1,2]	All	All	All	All	All	All	CS12	

Example: To add a 6ft 3/18ga whip, revise fixture catalog number from C2328E120 to C2328E120WP.

Notes

- [1] 5-15P, NEMA designation for a standard, North American, 3 prong 120V plug. L7-15P is 277V Twist Lock.
- [2] Factory selects color based on housing. Customer may spec color by adding W (white) or B (Black).

Catalog Number:
Notes: