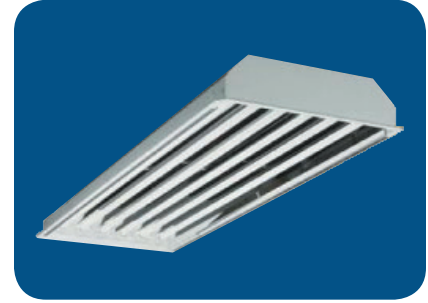


# HBP Series

## Fluorescent HiBay Enclosed Body



### FEATURES & SPECIFICATIONS

#### INTENDED USE

Mid level, specification grade, surface mounted, high performance, deep cell parabolic luminaire designed for maximum efficiency and visual comfort. Black reveal optional. Available in 2'x2', 2'x4', and 1'x4' configurations. Available with various lamp and parabolic cell configurations. For use in indoor applications.

#### SIZE W x L x H in inches (mm)

4 Light - 14.0W x 48.0L x 3.8Dp  
6 Light - 19.80W x 48.0L x 3.8Dp  
8 Light - 24.25W x 48.0L x 3.8Dp

#### LAMP

4, 6, or 8 lamp positions

#### CONSTRUCTION

Die formed and spot welded, 22 gauge cold rolled steel housing assembly. Die formed, cold rolled steel reveal. Precision formed, anodized no. 603 semispecular aluminum, louver. Standard nominal 3" deep cell louvers are manufactured using interlocked construction and mitred corners. Ballast cover snaps into place eliminating the need for tools when accessing the ballast. A protective film or bag is provided to protect the louver and fixture from construction dust. Louver hinges from either side. Latches use a positive locking cam action and come with matching finish.

#### MOUNTING

Mounting holes are provided within offset to prevent distortion of housing when tightening mounting fasteners.

#### OPTICS

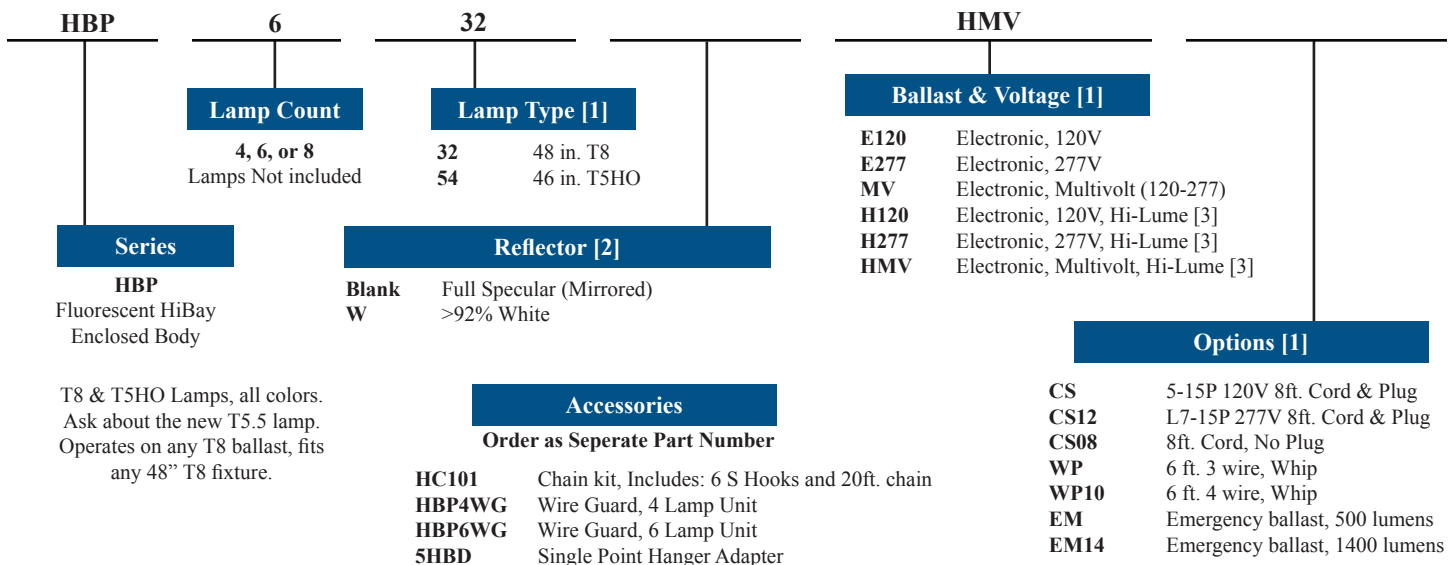
Fixture & Ballast: UL Listed  
Ballast: Thermally protected, class P, HPF, Non PCB

#### TYPICAL OPTIONS AND ACCESSORIES

Emergency ballasts, Cord sets, whips, occupancy sensors Hanging kits, Wire guards. Contact factory for additional options.

### ORDERING INFORMATION

Example: HBP632HMV



T8 & T5HO Lamps, all colors.  
Ask about the new T5.5 lamp.  
Operates on any T8 ballast, fits  
any 48" T8 fixture.

#### Notes

- [1] See end of T02HiBay for many additional lamps, ballasts, finishes, and options.  
[2] Custom reflectors available to create any light distribution.  
[3] HiLume and LoLume ballasts available for T8 lamps only.

Note: EM14 required for T5HO lamps.  
Consult factory for occupancy and daylight sensors.

Catalog Number:
Notes:

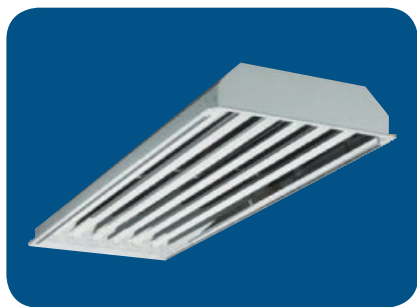
# HBP Series

Fluorescent HiBay  
Enclosed Body



T E X A S

F L U O R E S C E N T S



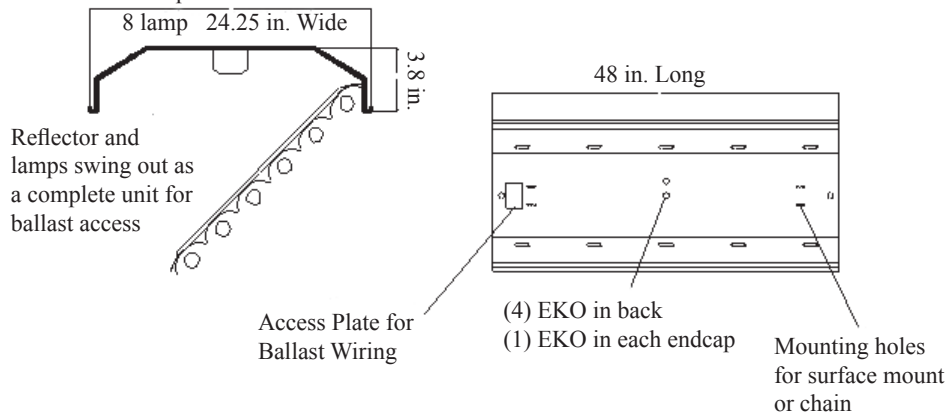
## DIMENSIONS

All dimensions are inches. Specifications subject to change without notice.

4 lamp 14.0 in. Wide

6 lamp 19.8 in. Wide

8 lamp 24.25 in. Wide



## PHOTOMETRICS

Calculated using the zonal cavity method in accordance with IESNA LM41 procedure. Lamp configurations shown are typical. Photometric data on these and other configurations available upon request.

Floor	20%	20%	20%	20%	20%	10%	10%	10%
Ceiling	80%	80%	80%	70%	70%	50%	50%	0%
Wall	70%	50%	30%	70%	50%	50%	30%	30%
RCR	Zonal cavity coefficients HBG432			Spacing ratio. Along 1.2 Across 1.3				
0	1.20	1.20	1.19	1.17	1.16	1.06	1.05	1.00
1	1.10	1.04	0.99	1.07	1.02	0.94	0.91	0.86
2	1.00	0.91	0.83	0.97	0.89	0.82	0.77	0.74
3	0.91	0.79	0.71	0.88	0.78	0.73	0.66	0.64
4	0.84	0.71	0.61	0.81	0.69	0.65	0.58	0.56
5	0.77	0.63	0.53	0.74	0.62	0.58	0.51	0.49
6	0.71	0.56	0.47	0.68	0.55	0.52	0.45	0.43
7	0.66	0.51	0.42	0.64	0.50	0.48	0.40	0.39
8	0.61	0.47	0.38	0.59	0.46	0.44	0.37	0.35
9	0.57	0.43	0.34	0.55	0.42	0.40	0.33	0.32
10	0.53	0.39	0.31	0.52	0.39	0.37	0.30	0.29

Floor	20%	20%	20%	20%	20%	10%	10%	10%
Ceiling	80%	80%	80%	70%	70%	50%	50%	0%
Wall	70%	50%	30%	70%	50%	50%	30%	30%
RCR	Zonal cavity coefficients HBG454			Spacing ratio. Along 1.2 Across 1.3				
0	1.20	1.20	1.20	1.18	1.17	1.06	1.06	1.01
1	1.11	1.07	1.02	1.09	1.04	0.96	0.93	0.89
2	1.03	0.94	0.88	1.00	0.93	0.86	0.82	0.78
3	0.94	0.84	0.76	0.92	0.83	0.77	0.72	0.69
4	0.88	0.76	0.67	0.85	0.74	0.64	0.64	0.62
5	0.81	0.68	0.60	0.79	0.67	0.57	0.57	0.55
6	0.75	0.62	0.53	0.73	0.61	0.51	0.51	0.50
7	0.70	0.57	0.48	0.69	0.56	0.47	0.47	0.46
8	0.66	0.52	0.44	0.64	0.52	0.43	0.43	0.42
9	0.62	0.48	0.40	0.60	0.48	0.40	0.40	0.39
10	0.58	0.45	0.37	0.57	0.44	0.36	0.36	0.36

Floor	20%	20%	20%	20%	20%	10%	10%	10%
Ceiling	80%	80%	80%	70%	70%	50%	50%	0%
Wall	70%	50%	30%	70%	50%	50%	30%	30%
RCR	Zonal cavity coefficients HBG632			Spacing ratio. Along 1.2 Across 1.3				
0	1.16	1.15	1.15	1.13	1.12	1.02	1.02	0.97
1	1.07	1.02	0.98	1.04	1.00	0.92	0.89	0.85
2	0.98	0.90	0.84	0.96	0.88	0.82	0.78	0.74
3	0.90	0.80	0.72	0.88	0.78	0.73	0.68	0.65
4	0.83	0.72	0.63	0.81	0.70	0.66	0.60	0.58
5	0.77	0.64	0.56	0.75	0.63	0.60	0.54	0.52
6	0.71	0.58	0.50	0.69	0.57	0.55	0.48	0.46
7	0.66	0.53	0.45	0.65	0.53	0.50	0.44	0.42
8	0.62	0.49	0.41	0.61	0.48	0.46	0.40	0.39
9	0.58	0.45	0.37	0.57	0.45	0.43	0.36	0.36
10	0.55	0.42	0.34	0.53	0.41	0.40	0.34	0.33

Floor	20%	20%	20%	20%	20%	10%	10%	10%
Ceiling	80%	80%	80%	70%	70%	50%	50%	0%
Wall	70%	50%	30%	70%	50%	50%	30%	30%
RCR	Zonal cavity coefficients HBG654			Spacing ratio. Along 1.2 Across 1.3				
0	1.05	1.04	1.03	1.02	1.02	0.92	0.92	0.88
1	0.97	0.93	0.89	0.95	0.91	0.84	0.81	0.78
2	0.89	0.82	0.77	0.87	0.81	0.75	0.71	0.69
3	0.82	0.74	0.67	0.80	0.72	0.68	0.63	0.61
4	0.76	0.66	0.59	0.74	0.65	0.61	0.56	0.54
5	0.71	0.60	0.52	0.69	0.59	0.56	0.50	0.49
6	0.66	0.54	0.47	0.64	0.53	0.51	0.45	0.44
7	0.61	0.50	0.42	0.60	0.49	0.47	0.41	0.40
8	0.58	0.46	0.39	0.56	0.45	0.44	0.38	0.37
9	0.54	0.42	0.36	0.53	0.43	0.40	0.35	0.34
10	0.51	0.39	0.33	0.50	0.39	0.38	0.32	0.31

Catalog Number:
Notes: