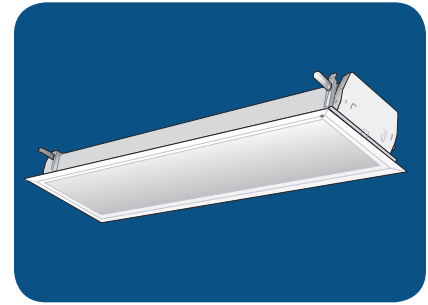


128 1 x 4 ft.

Lensed Static Troffer,
F-Trim Plaster Ceiling Recessed



FEATURES & SPECIFICATIONS

INTENDED USE

Specification grade F-Trim troffer installs directly in plaster ceilings, with a wide face trim to cover rough-in hole. Troffer is ideal for all commercial and industrial buildings requiring recessed illumination in plaster / sheetrock ceilings.

SIZE W x L x H in inches (mm)

13.25W x 50.44L x 5.12Dp (335 x 1280 x 130)

LAMP

1 or 2 lamp positions. (Contact Factory for 3 or 4 lamp model availability)

MATERIALS & FEATURES

Housing is die-formed and embossed code 22 gage steel. Finish is high reflectance baked white enamel. Wiring knockouts are provided on back and end of housing. Ballast cover or reflector snaps into place; no tools required for ballast access. Lens is held with a hinged steel door frame; frame hinges downward on either side and is held closed by two positive cam latches. Premium, full specular reflectors are available as an option to increase efficiency or modify lighting distribution.

- Swing lugs accessed from below
- Clear 0.10thk A12 acrylic lens is standard; many options available.
- Flush steel hinges from either side; field reversible.
- Access plate to simplify installation

MOUNTING

F-Trim for plaster, concealed Z-spline, or wood trim ceilings. Recessed.

LISTING

Fixture & Ballast: UL Listed
Ballast: Thermally protected, class P, HPF, Non PCB

TYPICAL OPTIONS AND ACCESSORIES

Emergency ballasts, whips, regressed doors, wire guards, and lenses. See options page at the end of the T02Grid section, or contact factory for more details.

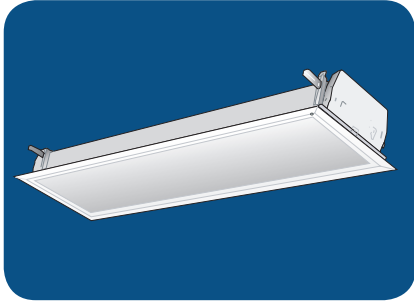
ORDERING INFORMATION

Example: 128 A 232 12 E120

| | | | | | |
|--|-------------------------------------|---|-----------------------|--|-------------|
| 128 | A | 2 | 32 | 12 | E120 |
| Series | Lamp Position | Lamp Type [1] | | Ballast & Voltage [1] | |
| 128 Lensed Static Troffer, F-Trim Plaster Ceiling Recessed | 1 or 2 Lamps Not included | 40 | 48 in. T12 [7] | E120 Electronic, 120V E277 Electronic, 277V MV Electronic, Multivolt (120-277) H120 [4] Electronic, 120V, Hi-Lume H277 [4] Electronic, 277V, Hi-Lume HMV [4] Electronic, Multivolt, Hi-Lume L120 [4] Electronic, 120V, Lo-Lume L277 [4] Electronic, 277V, Lo-Lume LMV [4] Electronic, Multivolt, Lo-Lume G120 [5] Line Dimming, 120 Volt G277 [5] Line Dimming, 277 Volt GMV [5] Line or 0-10V dimming, Multivolt | |
| Lens Material [2] | | 32 | 48 in. T8 | | |
| A Prismatic Acrylic #12 Pattern A.125 Prismatic Acrylic #12 Pattern 1/8" MW Matte White Acrylic SP1 Specular Parabolic Louver 1/2" x 1/2" x 3/8" SP4 Specular Parabolic Louver 3/4" x 3/4" x 1/2" SP2 Specular Parabolic Louver 1 1/2" x 1 1/2" x 1" PLA White Cubed Acrylic Louver 1/2" x 1/2" x 3/8" | | 28 | 46 in. T5 | | |
| | | 54 | 46 in. T5HO | | |
| 1x4 Size Code (req'd on all item numbers) | | 12 The 12 size code must appear in all 1x4 items. | | Reflector [3] | |
| Notes [1] See end of T02Grid for many additional lamps, ballasts, finishes, and options. [2] Custom louvers available in any cell configuration. Contact factory for additional information. [3] Custom reflectors available to create any light distribution. [4] HiLume and LoLume ballasts available for T8 lamps only. [5] Dimming ballasts available for T8 & T5HO lamps only. [6] Magnetic ballasts available for T8 & T12 only. [7] Magnetic & electronic T12 ballasts drive a 34W energy saver lamp. | | (blank) no reflector [3] M20 Mirrored reflector | | Options [1] | |
| | | WP 6 ft. 3 wire 18 gauge whip WP10 6 ft. 4 wire 18 gauge whip [3] EM Emergency ballast, 500 lumens [4] EM14 Emergency ballast, 1400 lumens [4] | | EM14 ballast required for T5 & T5HO lamps | |

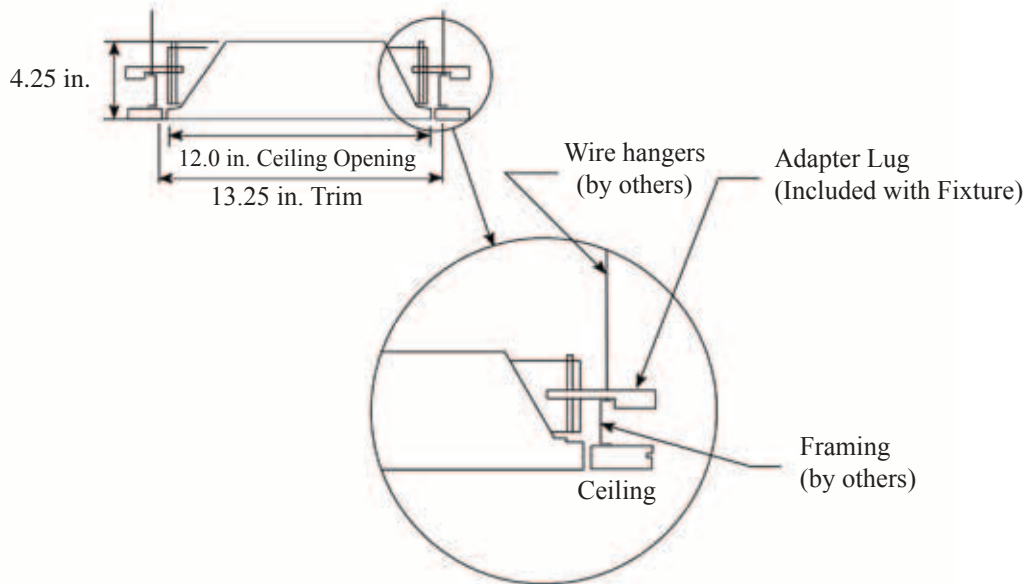
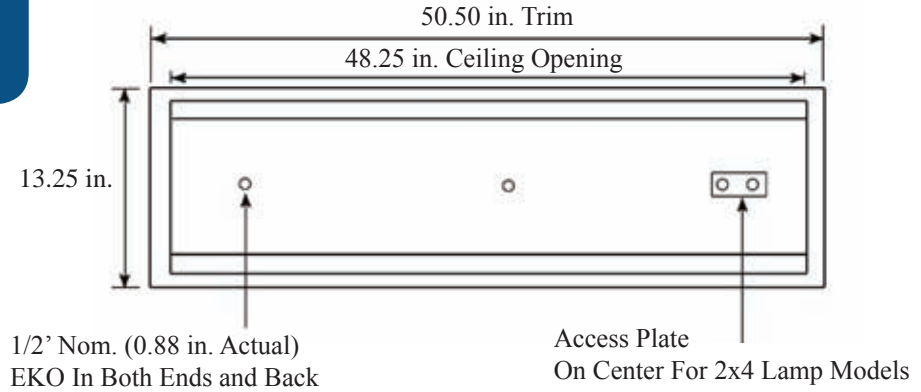
128 1 x 4 ft.

Lensed Static Troffer,
F-Trim Plaster Ceiling Recessed



DIMENSIONS

All dimensions are inches. Specifications subject to change without notice.



| |
|-----------------|
| Catalog Number: |
| Notes: |

128 2 x 4 ft.

Lensed Static Troffer,
F-Trim Plaster Ceiling Recessed



FEATURES & SPECIFICATIONS

INTENDED USE

Specification grade F-Trim troffer installs directly in plaster ceilings, with a wide face trim to cover rough-in hole. Troffer is ideal for all commercial and industrial buildings requiring recessed illumination in plaster / sheetrock ceilings.

SIZE W x L x H in inches (mm)

24.75W x 50.44L x 5.12Dp (335 x 1280 x 130)

LAMP

2, 3, or 4 lamp positions.

MATERIALS & FEATURES

Housing is die-formed and embossed code 22 gage steel. Finish is high reflectance baked white enamel. Wiring knockouts are provided on back and end of housing. Ballast cover or reflector snaps into place; no tools required for ballast access. Lens is held with a hinged steel door frame; frame hinges downward on either side and is held closed by two positive cam latches. Premium, full specular reflectors are available as an option to increase efficiency or modify lighting distribution.

- Swing out lugs accessed from below.
- Clear 0.10 thick A12 acrylic lens is standard; many options available.
- Flush steel hinges from either side; field reversible.
- Access plate to simplify installation

MOUNTING

F-Trim for plaster, concealed Z-spline, or wood trim ceilings. Recessed.

LISTING

Fixture & Ballast: UL Listed

Ballast: Thermally protected, class P, HPF, Non PCB

TYPICAL OPTIONS AND ACCESSORIES

Emergency ballasts, whips, regressed doors, wire guards, and lenses. See options page at the end of the T02Grid section, or contact factory for more details.

ORDERING INFORMATION

Example: 128 A 232 E120

| | | | | |
|---|--|--|----------------|--|
| 128 | A | 2 | 32 | E120 |
| Series | Lamp Position | Reflector [3] | | Ballast & Voltage [1] |
| 128 Lensed Static Troffer, F-Trim Plaster Ceiling Recessed | 2, 3, or 4 Lamps Not included | (blank) no reflector [3] M20 Mirrored reflector | | E120 [4] Electronic, 120V E277 [4] Electronic, 277V MV [4] Electronic, Multivolt (120-277) H120 [4] Electronic, 120V, Hi-Lume H277 [4] Electronic, 277V, Hi-Lume HMV [4] Electronic, Multivolt, Hi-Lume L120 [5] Electronic, 120V, Lo-Lume L277 [5] Electronic, 277V, Lo-Lume LMV [5] Electronic, Multivolt, Lo-Lume G120 Line Dimming, 120 Volt G277 Line Dimming, 277 Volt GMV Line or 0-10V dimming, Multivolt |
| Lens Material [2] | | Lamp Type [1] | | Options [1] |
| A | Prismatic Acrylic #12 Pattern | 40 | 48 in. T12 [7] | WP |
| A.125 | Prismatic Acrylic #12 Pattern 1/8" | 32 | 48 in. T8 | WP10 |
| MW | Matte White Acrylic | 28 | 46 in. T5 | EM |
| SP1 | Specular Parabolic Louver 1/2" x 1/2" x 3/8" | 54 | 46 in. T5HO | EM14 |
| SP4 | Specular Parabolic Louver 3/4" x 3/4" x 1/2" | | | Emergency ballast, 500 lumens [4] |
| SP2 | Specular Parabolic Louver 1 1/2" x 1 1/2" x 1" | | | Emergency ballast, 1400 lumens [4] |
| PLA | White Cubed Acrylic Louver 1/2" x 1/2" x 3/8" | | | EM14 ballast required for T5 & T5HO lamps |

Notes

- [1] See end of T02Grid for many additional lamps, ballasts, finishes, and options.
- [2] Custom louvers available in any cell configuration. Contact factory for additional information.
- [3] Custom reflectors available to create any light distribution.
- [4] HiLume and LoLume ballasts available for T8 lamps only.
- [5] Dimming ballasts available for T8 & T5HO lamps only.
- [6] Magnetic ballasts available for T8 & T12 only.
- [7] Magnetic & electronic T12 ballasts drive a 34W energy saver lamp.

Texas Fluorescents

2055 Luna Rd. Suite 142 Carrollton, TX 75006

Phone: 972-247-3171 Fax: 972-247-0200

www.texasfluorescents.com email: sales@texasfluorescents.com

Catalog Number:

Notes:

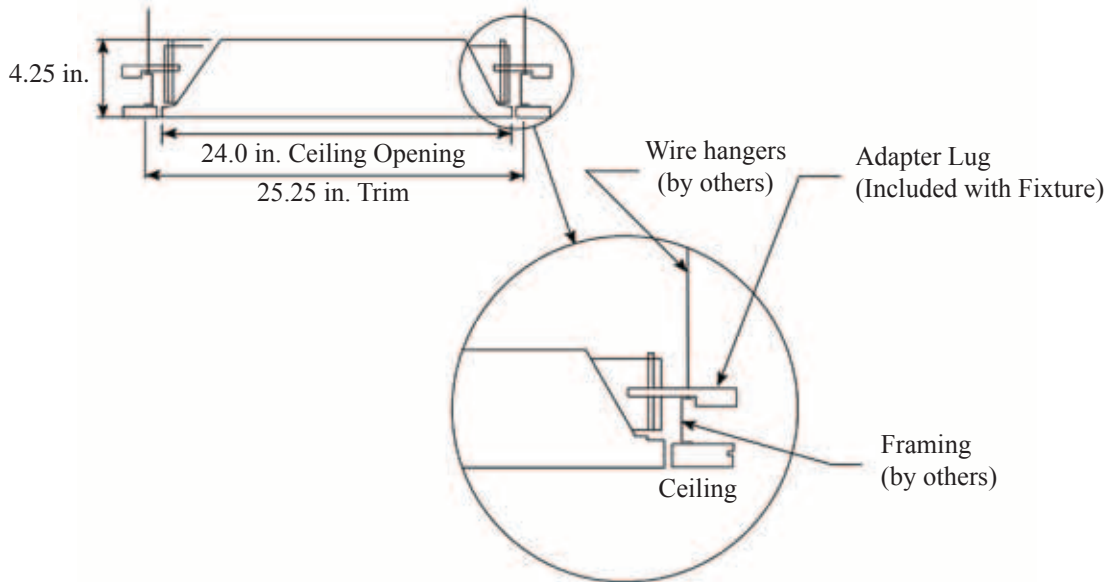
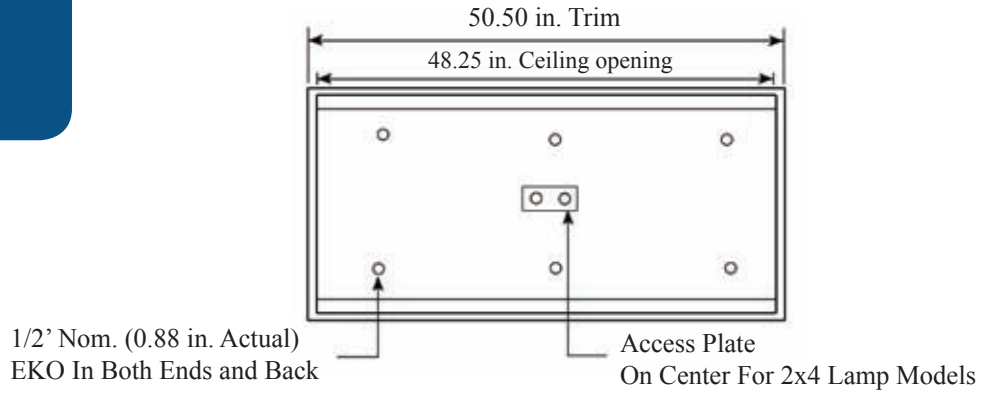
128 2 x 4 ft.

Lensed Static Troffer,
F-Trim Plaster Ceiling Recessed



DIMENSIONS

All dimensions are inches. Specifications subject to change without notice.



| |
|-----------------|
| Catalog Number: |
| Notes: |