

Parabolic Retrofit Kit

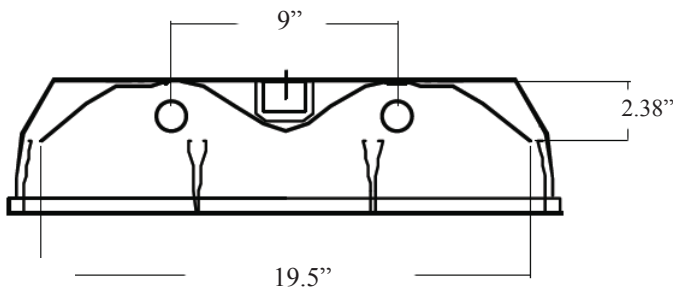
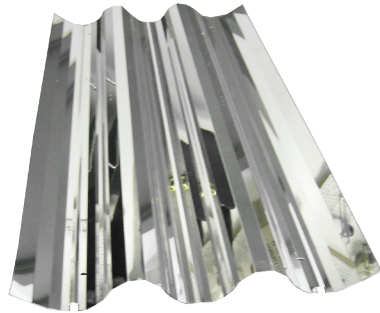
Parabolic Kit - Retrofit
for parabolic body

FEATURES & SPECIFICATIONS

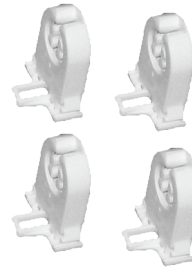
- Maximum Efficiency
- Fast, simple installation
- Remove reflectors without tools

MATERIALS

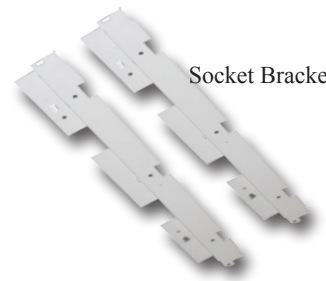
Reflectors are a premium and standard full specular mirrored aluminum which is warranted against yellowing, chipping, cracking, or any surface deterioration that might affect the reflectivity for a period of 10 years, and enhanced white which is warranted to not chip, crack, or peel for a period of 10 years. Socket Bars are white. Code gage steel.



Lamp Holders

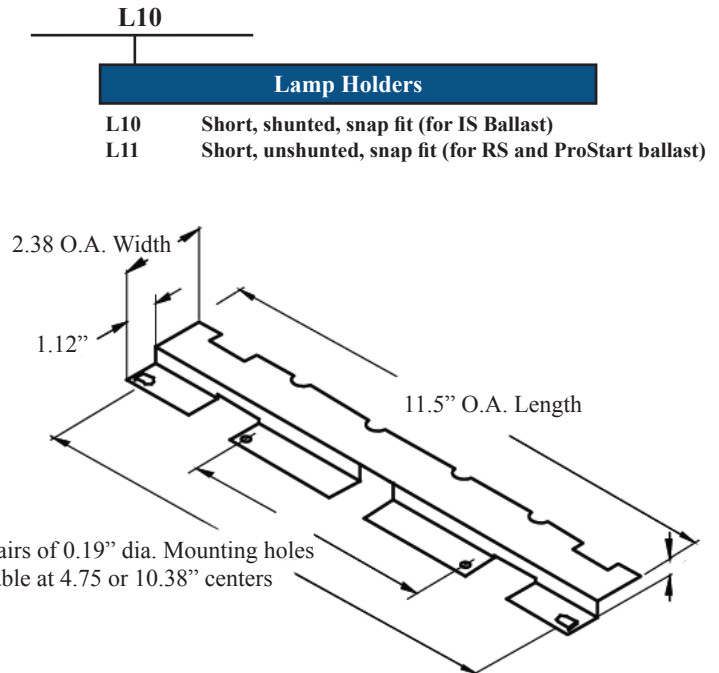
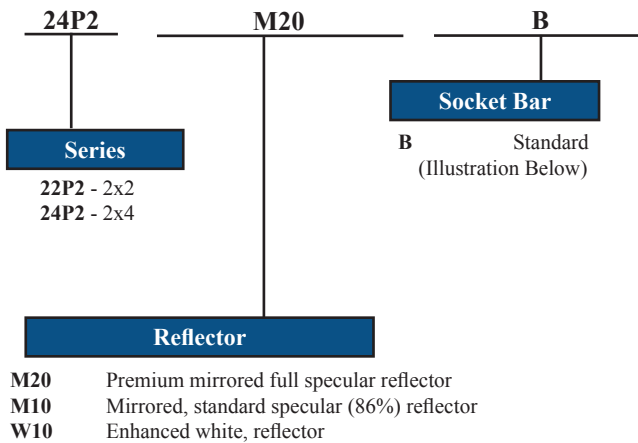


Socket Brackets



ORDERING INFORMATION

Example: 24P2M20BL10



Accessories - order as a separate part number

Commercial grade electronic ballasts available in fixed and multi-volt; instant start, and prostart, low, normal, or high lumen output. Consult factory for part number and availability.

Lamps: Fluorescent, 4 ft. nominal. Available in multiple wattages, CRI's and color temperatures. Call factory for part numbers.

Catalog Number:
Notes:

Parabolic Retrofit Kit

**Parabolic Kit - Retrofit
for parabolic body**

PHOTOMETRICS

Coefficients of Utilization - Zonal Cavity Method Effective Floor Cavity Reflectance 0.20												
RC	80%				70%				50%			
RW	70%	50%	30%	10%	70%	50%	30%	10%	50%	30%	10%	
0	95	95	95	95	93	93	93	93	89	89	89	
1	89	85	83	80	87	84	81	79	80	78	76	
2	82	76	72	68	80	74	71	67	72	69	66	
3	76	69	63	59	74	68	62	58	65	61	57	
4	70	62	56	51	69	61	55	51	59	54	50	
5	65	56	49	44	63	55	49	44	53	48	44	
6	60	50	44	39	59	50	44	39	48	43	39	
7	56	46	39	35	54	45	39	35	44	38	34	
8	51	41	35	30	50	41	35	30	40	34	30	
9	48	37	31	27	46	37	31	27	36	30	26	
10	44	34	28	24	43	33	28	24	33	27	24	

Plane: 0-DEG 90-DEG
Spacing Criteria: 1.2 1.2
Efficiency: 80.1%
Photometric Certified by: Luminaire Testing Laboratory
Report No. 13754

Catalog Number:
24P

Lamps:
Two F32T8

Ballast:
Electronic

Total Reflectivity:
Miro-4 High Gloss 95%
High Reflective White 91%

Catalog Number:
Notes: