



T E X A S

F L U O R E S C E N T S

# 8RB Series

96 in. LED Retrofit Kit

## FEATURES & SPECIFICATIONS

### INTENDED USE

Ballast retrofit kit, 96 in. long, converts an existing strip to carry standard lamps. Material is die-formed 22 gage steel, with high reflectance baked white enamel finish.



## ORDERING INFORMATION

### STANDARD

Example: **8RB422S48W4800LDMV40K**

8RB	422	S48W4800L	DMV	40K
<b>Series</b>	<b>Width</b>	<b>Wattage and Lumen</b>	<b>Driver</b>	<b>Kelvin Temperature</b>
8RB 96 in.	422 4.25 in. 501 5.0 in.	<b>S48W5650L*</b> 48 System Watts, 5650 Delivered Lumens <b>S60W7600L**</b> 60 System Watts, 7600 Delivered Lumens <b>S97W11300L**</b> 97 System Watts, 11300 Delivered Lumens <b>S114W12800L**</b> 114 System Watts, 12800 Delivered Lumens	<b>DMV</b> 0-10V <b>MV</b> Multi - Volt 120V-277V	<b>30K</b> 3000K <b>35K</b> 3500K <b>40K</b> 4000K <b>50K</b> 5000K
<small>*48W - 1 Row LED module **60W,97W,114W - 2 Rows LED module</small>				

### HIGH OUTPUT

8RB	422	H72W8200L	DMV	40K
<b>Series</b>	<b>Width</b>	<b>Wattage and Lumen</b>	<b>Driver</b>	<b>Kelvin Temperature</b>
8RB 96 in.	422 4.25 in. 501 5.0 in.	<b>H72W8200L</b> 72 System Watts, 8200 Delivered Lumens <b>H144W16400L</b> 144 System Watts, 16400 Delivered Lumens	<b>DMV</b> 0-10V <b>MV</b> Multi - Volt 120V-277V	<b>30K</b> 3000K <b>35K</b> 3500K <b>40K</b> 4000K <b>50K</b> 5000K
<small>*72W - 1 Row LED module 144W - 2 Rows LED module</small>				

\* Consult for more options

Texas Fluorescents  
2055 Luna Rd. Suite 142 Carrollton, TX 75006  
Phone: 972-247-3171 Fax: 972-247-0200  
www.texasfluorescents.com email: sales@texasfluorescents.com

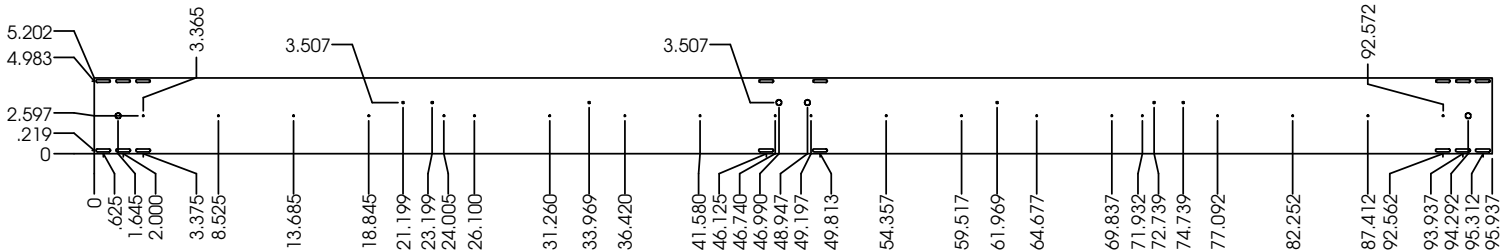
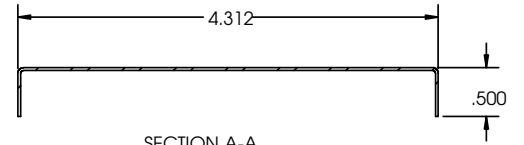
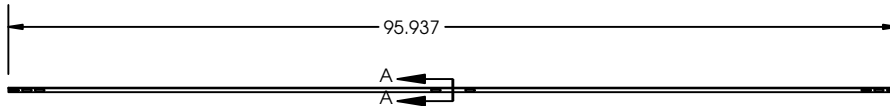
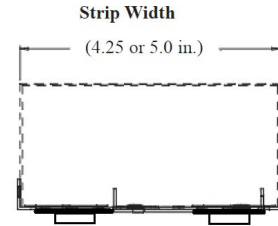
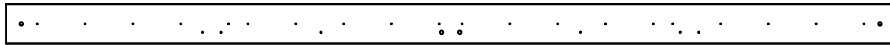
Catalog Number:
Notes:

# 8RB Series

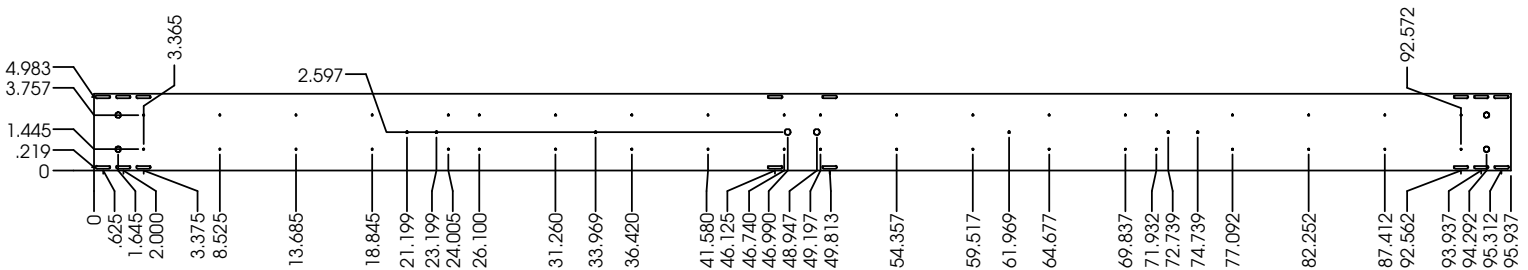
96 in. LED Retrofit Kit

## DIMENSIONS

All dimensions are inches. Specifications subject to change without notice.



1 Row LED boards



2 Rows LED boards



Catalog Number:
Notes: