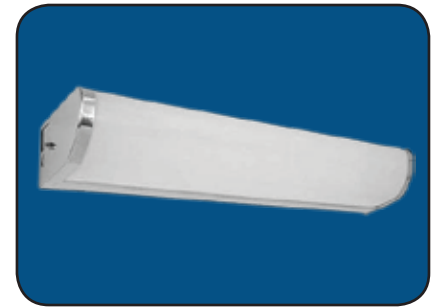




T E X A S F L U O R E S C E N T S

BKV Series

LED Wall Mount, Rounded Front



FEATURES & SPECIFICATIONS

INTENDED USE

The BKV is a specification grade wall mount for the bath, stairwells, office, and “over the bed” applications, and is distinguished by excellent lighting distribution and craftsmanship. The angled front plane provides aesthetic appeal.

SIZE

W x L x H in inches (mm)

3.25H x 5.50W (85 x 140)

Available in 24, 36, and 48in (610, 915, 1220) lengths

MOUNTING

Direct wall mount.

MATERIALS & FEATURES

Housing is die-formed and embossed code 22 gage steel. Standard finish is high reflectance baked white enamel; chrome ends or full chrome body are available as an option. Wiring knockouts are provided on back of housing. Lens is fully captured by end plate.

End cap held in place with acorn nut.

- Standard high reflectance white finish with smooth white lens
- Chrome body, or chrome ends only finishes available.
- Options include prismatic lens, special ballasts, pull chain switches, and convenience outlets.

TYPICAL OPTIONS AND ACCESSORIES

Custom finishes, pull chains, convenience outlets, and Emergency ballasts. See options page at the end of the T02WallF section, or contact factory for more details.



ORDERING INFORMATION

Example: BKVMW24LS24W2250LDMV40KCHEND

STANDARD

BKV	MW	24L	S24W2250L	DMV	40K	CHEND
Series		Size	Wattage and Lumen	Driver	Color Temperature	Finish
BKV		24L 24"	S24W2250L 24 System Watts, 2250 Delivered Lumens S28W2550L 28 System Watts, 2550 Delivered Lumens	DMV 0-10V MV ? gfl - Half 120V-277V	30K 3000K 35K 3500K 40K 4000K 50K 5000K	BLANK White(standard) CH Chrome finish CHEND Chrome finish *on end caps only
Lensed wall mount Rounded bottom						Options
	Lens					SW2 Pull chain, 2 way switching (Use with single ballast) GCO Grounded convenience outlet (North American 3 Prong)
	MW Smooth white acrylic					*SW2 and GCO options available for 120V models only.

HIGH OUTPUT

BKV	MW	24L	H36W3300L	DMV	40K	CHEND
Series		Size	Wattage and Lumen	Driver	Color Temperature	Finish
BKV		24L 24"	H36W3300L 36 System Watts, 3300 Delivered Lumens	DMV 0-10V MV ? gfl - Half 120V-277V	30K 3000K 35K 3500K 40K 4000K 50K 5000K	BLANK White(standard) CH Chrome finish CHEND Chrome finish *on end caps only
Lensed wall mount Rounded bottom						Options
	Lens					SW2 Pull chain, 2 way switching (Use with single ballast) GCO Grounded convenience outlet (North American 3 Prong)
	MW Smooth white acrylic					*SW2 and GCO options available for 120V models only.

*Consult for more options

Texas Fluorescents
2055 Luna Rd. Suite 142 Carrollton, TX 75006
Phone: 972-247-3171 Fax: 972-247-0200
www.texasfluorescents.com email: sales@texasfluorescents.com

Catalog Number:
Notes:

BKV Series

LED Wall Mount, Rounded Front



ORDERING INFORMATION STANDARD

Example: BKVMW48LS48W4500LDMV40KCHEND

BKV	MW	48L	S48W4500L	DMV	40K	CHEND
Series		Size	Wattage and Lumen	Driver	Color Temperature	Finish
BKV Lensed wall mount Rounded bottom		48L 48"	S48W4500L 48 System Watts, 4500 Delivered Lumens S57W5100L 57 System Watts, 5100 Delivered Lumens	DMV 0-10V MV ? gfl - Half 120V-277V	30K 3000K 35K 3500K 40K 4000K 50K 5000K	BLANK White(standard) CH Chrome finish CHEND Chrome finish *on end caps only
	Lens					Options
	MW Smooth white acrylic					SW2 Pull chain, 2 way switching (Use with single ballast) GCO Grounded convenience outlet (North American 3 Prong)

*SW2 and GCO options available for 120V models only.

HIGH OUTPUT

BKV	MW	48L	H72W6600L	DMV	40K	CHEND
Series		Size	Wattage and Lumen	Driver	Color Temperature	Finish
BKV Lensed wall mount Rounded bottom		48L 48"	H72W6600L 72 System Watts, 6600 Delivered Lumens	DMV 0-10V MV ? gfl - Half 120V-277V	30K 3000K 35K 3500K 40K 4000K 50K 5000K	BLANK White(standard) CH Chrome finish CHEND Chrome finish
	Lens					Options
	MW Smooth white acrylic					SW2 Pull chain, 2 way switching (Use with single ballast) GCO Grounded convenience outlet (North American 3 Prong)

*SW2 and GCO options available for 120V models only.

***Consult for more options**

Texas Fluorescents
2055 Luna Rd. Suite 142 Carrollton, TX 75006
Phone: 972-247-3171 Fax: 972-247-0200
www.texasfluorescents.com email: sales@texasfluorescents.com

Catalog Number:
Notes:



BKV Series

LED Wall Mount, Rounded Front

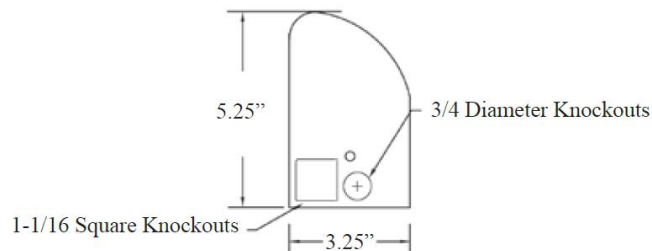
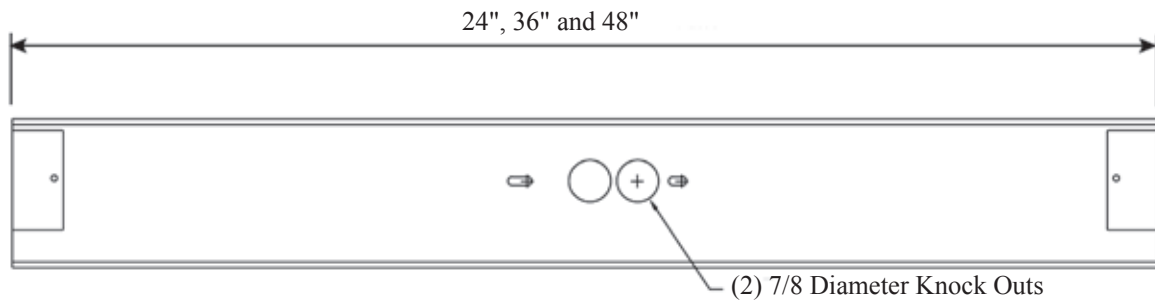


T E X A S

F L U O R E S C E N T S

DIMENSIONS

All dimensions are inches. Specifications subject to change without notice.



Catalog Number:
Notes: