

PL Fixture PL Floods

FEATURES & SPECIFICATIONS

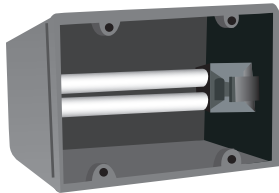
Features

- Clear polycarbonate lens
- Polished aluminum reflector
- Swivel knuckle for directional lighting
- UL Type 1 outdoor ballast
- Neoprene lens gasket
- Lamp included
- UL listed

Options

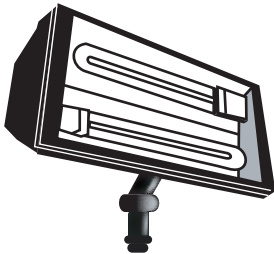
- Photocell
- High power factor
- Electronic
- Black, green or white polycarbonate housing
- Tamper resistant screws

ORDERING INFORMATION



POLY PL FLOODS		
<u>Part Number</u>	<u>Bulb</u>	<u>Size</u>
BPF113	1-PL13 WATT	8-1/4" X 4-1/2"
BPF122	1-PL22 WATT QUAD	8-1/4" X 4-1/2"

POLY FLOOD LIGHTS ARE AVAILABLE IN BLACK, WHITE AND GREEN.
PART NUMBERS BEGIN WITH COLOR CODE - BPF, WPF, GPF



STEEL PL FLOODS		
<u>Part Number</u>	<u>Bulb</u>	<u>Size</u>
BZSF213	2-PL13 WATT	9-5/8" X 5-1/4"

STEEL FLOOD LIGHTS ARE STANDARD IN ARCHITECTURAL
BRONZE POWDERCOAT, CUSTOM COLORS AVAILABLE.

(972) 247-3171

Factory/Warehouse • 2055 Luna Road • Suite 142 • Carrollton, TX 75006

(972) 247-3171 Phone • (972) 247-0200 Fax

Email sales@texasfluorescents.com

Look For Complete Internet Catalog • www.texasfluorescents.com