

CV200 Series

8 x 8 Ceiling Fixture

FEATURES & SPECIFICATIONS

APPLICATIONS

Parking areas, entrances, walkways, underpasses, loading docks, and recreation areas.

SIZE W x L x H in inches (mm)

9.0W x 9.0L x 7.50Dp

LAMP

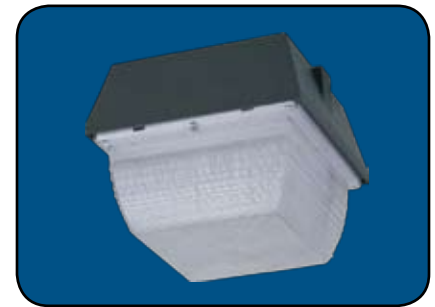
- 70 Watt Metal Halide
- 70 Watt High Pressure Sodium
- 100 Watt High Pressure Sodium
- (1) 26 Watt Plug In Fluorescent
- (1) 42 Watt Plug In Fluorescent

MATERIALS & FEATURES

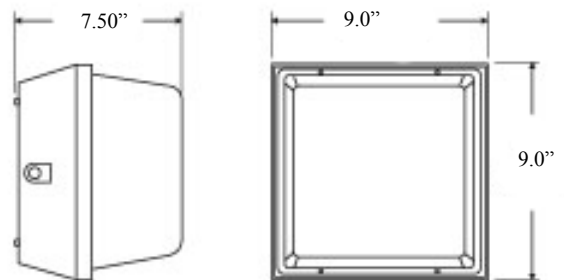
Heavy duty die-cast aluminum powder coating construction
 High impact polycarbonate lens
 One piece anodized aluminum designed reflector for best light efficiency.
 Silicone rubber included to prevent any leakage from the outside
 1/2" tapped holes available for installing photocell (optional)
 Infield installable directional indicators.

LISTING

UL Listed for wet locations for ceiling and wall mounting

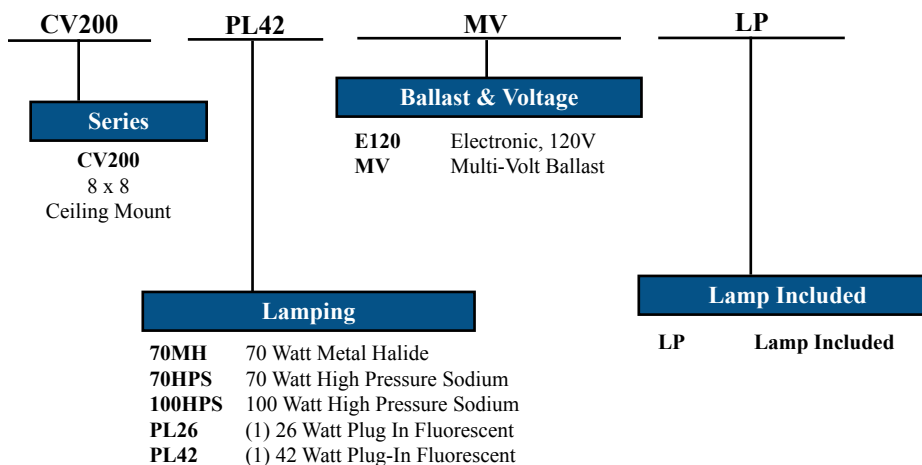


DIMENSIONS



ORDERING INFORMATION

Example: CV200-PL42-MV-LP



Catalog Number:
Notes: