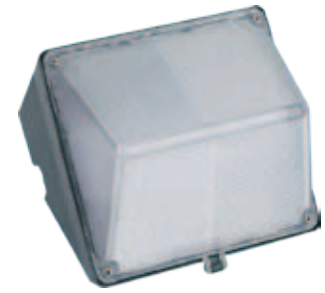


FEATURES & SPECIFICATIONS

- Heavy Duty Die Cast Aluminum Housing
- Bronze Powder-Coat Finish
- Polycarbonate Lens for HPS
- Glass Lens for MH
- One Piece Anodized Aluminum Reflector.
- Optional Photocell for easy field installation.
- Size: 8.5W x 9.375H x 7.0D
- Lamps Included.



ORDERING INFORMATION

EX: DC100-50HPS-120-LP

Series	Wattage	Bulb Type	Ballast & Voltage	Lamp
DC100P	35	HPS (High Pressure Sodium)	120 Volt	LP
DC100P	50	HPS (High Pressure Sodium)	120 Volt	LP
DC100P	70	HPS (High Pressure Sodium)	120 Volt	LP
DC100P	100	HPS (High Pressure Sodium)	120 Volt	LP
DC100G	50	MH (Metal Halide)	120 Volt	LP
DC100G	70	MH (Metal Halide)	120 Volt	LP
DC100G	100	MH (Metal Halide)	120 Volt	LP

Accessories:

Description	Model #	Image
Photocell 120 V	PC	