

DID Series

Direct / Indirect Linear Strip



FEATURES & SPECIFICATIONS

INTENDED USE

Medium body decorative strip with reflectors and basket options for offices, conference rooms, retail, and utility areas requiring concentrated illumination in a commercial quality configuration with more style. By choosing the reflector types and basket materials, the lighting designer can control the light intensity.

SIZE W x L x H in inches (mm)

Fixture width and height vary with reflector selection

Fixture length = lamp(s) length

MATERIALS & FEATURES

Housing is die-formed and embossed code 22 gage steel. Body finish is high reflectance baked white enamel. Wiring knockouts are provided on back and end of housing. Reflectors attach with quarter turn fasteners; no tools required for ballast access. End plate doubles as coupler for continuous row mounts. Reflectors available in several materials. Perforated metal reflectors and baskets are made of cold rolled steel treated with rust inhibitor. Perforated metal parts are post painted with a durable baked polyester coat. Each piece is formed by our state-of-the-art multi-radii machine for consistency.

- P10 - Perforated Reflector
- W30, economical white steel reflectors, for abusive locations
- M24, Premium full specular (mirrored) reflectors, for abusive locations

LAMP

1 or 2 Lamp Positions in Cross section.

MOUNTING

Surface mount, chain hung, stem mount. See end of chapter T02Strip for accessory mount kits.

LISTING

Fixture and Ballast: UL Listed.

Ballast: Thermally protected, class P, HPF,

Non PCB; unless specified otherwise.

TYPICAL OPTIONS AND ACCESSORIES

Emergency ballasts, whips, fuses, and wire guards.

See options page at the end of the T02Linear section, or contact factory for more details.

ORDERING INFORMATION

Example: **DID 232 W30 BF MV**

DID	2	32	8	W30	BF	MV
	(Lamps not Included)					
	Lamp Count		Lamp Type [1]		Ballast & Voltage [1]	
Series	1 or 2	40	48in. T12 [6]	8	8ft. Tandem (Double Lamp Count)	E120 Electronic, 120V
DID	1 or 2	F96T12	96in. T12 Slimline			E277 Electronic, 277V
Direct/Indirect	1 or 2	F48T12HO	48in. T12	8	8ft. Tandem (Double Lamp Count)	MV Electronic, Multivolt
	1 or 2	F96T12HO	96in. T12 [8]			H120 Electronic, Hi-Lume 120V
	1 or 2	32	48in. T8	8	8ft. Tandem (Double Lamp Count)	H277 Electronic, Hi-Lume 277V
	1 or 2	59	96in. F96T8 59W Slimline			HMV Electronic, Hi-Lume Multivolt
	1 or 2	F48T8HO	48in. T8	8	8ft. Tandem (Double Lamp Count)	L120 Electronic, Lo-Lume 120V
	1 or 2	F96T8HO	96in. T8			L277 Electronic, Lo-Lume 277V
	2	28	46in. T5 [5]	8	8ft. Tandem (Double Lamp Count)	LMV Electronic, Lo-Lume Multivolt
	2	54	46in. T5HO [5]	8	8ft. Tandem (Double Lamp Count)	M120 Magnetic, 120V
						M277 Magnetic, 277V
						S Residential 120V Ballast
						Basket Type
						BP Perforated Basket
						BF Fine Fluted Lens Basket
						BL Smooth White Lens, Basket
						Reflectors [3]
				W30	White Steel Reflector	
				P10	Perforated Reflector	
				M24	Full Specular (mirrored) Reflector	
						Options [1]
						WP 6 ft. 3 wire 18 gauge whip
						WP10 6 ft. 4 wire 18 gauge whip
						EM Emergency ballast, 500 lumens
						EM14 Emergency ballast, 1400 lumens

Notes

[2] Tandem doubles length and lamp count. Same lamps in cross section, additional lamps end to end.

[3] Custom reflectors available to create any light distribution.

[4] HiLume and LoLume ballasts available for T8 lamps only.

[5] T5 & T5HO S body strips are full 24/36/48/96in length. See KDS series for shorter strips.

[6] Magnetic ballasts available for T8 & T12 only.

[7] Standard magnetic T12 ballasts for 48in lamp drive a 34W energy saver. Specify electronic to drive 48in T12 34 or 40W lamp.

[8] Electronic ballasts ONLY for F96T12HO.

Texas Fluorescents

2055 Luna Rd. Suite 142 Carrollton, TX 75006

Phone: 972-247-3171 Fax: 972-247-0200

www.texasfluorescents.com email: sales@texasfluorescents.com

Catalog Number:

Notes:

EM14 ballast req'd for T5HO lamps

DID Series

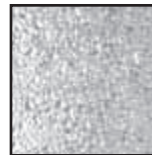
Direct / Indirect Linear Strip



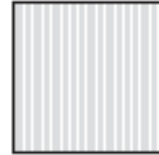
DIMENSIONS

All dimensions are inches. Specifications subject to change without notice.

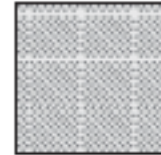
Basket Options



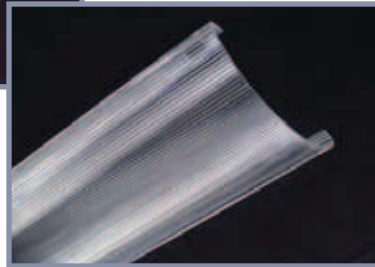
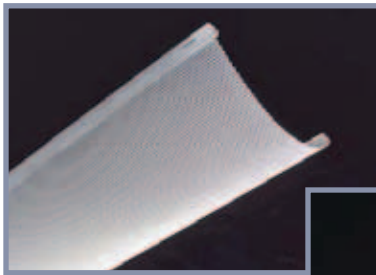
Smooth
White Lens



Fine Fluted
Lens



Perforated



Catalog Number:
Notes: