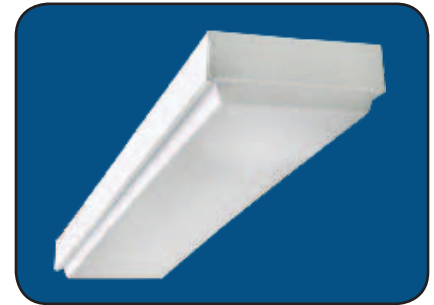


# EVL Series

Economy Grade, surface mounted ceiling luminaire



## FEATURES & SPECIFICATIONS

### INTENDED USE

Economy grade, surface mounted ceiling luminaire. For use in indoor applications, such as office areas, retail stores, recreation rooms, corridors and nursing homes, where low cost, but commercial grade ruggedness is required.

### SIZE W x L x H in inches (mm)

10.375W x 48.0L x 3.125Dp  
16.125W x 48.0L x 3.125Dp

### LAMP

2 or 4 lamp positions

### CONSTRUCTION

Die formed of 20 guage, primes C.R.S. Completely welded, one piece unitized construction for maximum strength and rigidity. Units may be surface or pendant mounted individually or in continuous rows.

### ELECTRICAL

All electrical components are CSA or UL approved. The standard voltage is 120V, 60Hz, or as specified. Units suitable for multi-voltages and suitable for 50-60 Hz are also available. Standard ballasts are electromagnetic, energy saving where required. Sufficient

### BALLAST COVERS

Die formed 24 gauge, for ease in snapping into position, without the use of tools.

### DIFFUSERS

Drop Dish (DP) diffuser standard. Optional diffusers available include: Smooth White Acrylic (MW) or Clear Prismatic Acrylic (A).

### TYPICAL OPTIONS AND ACCESSORIES

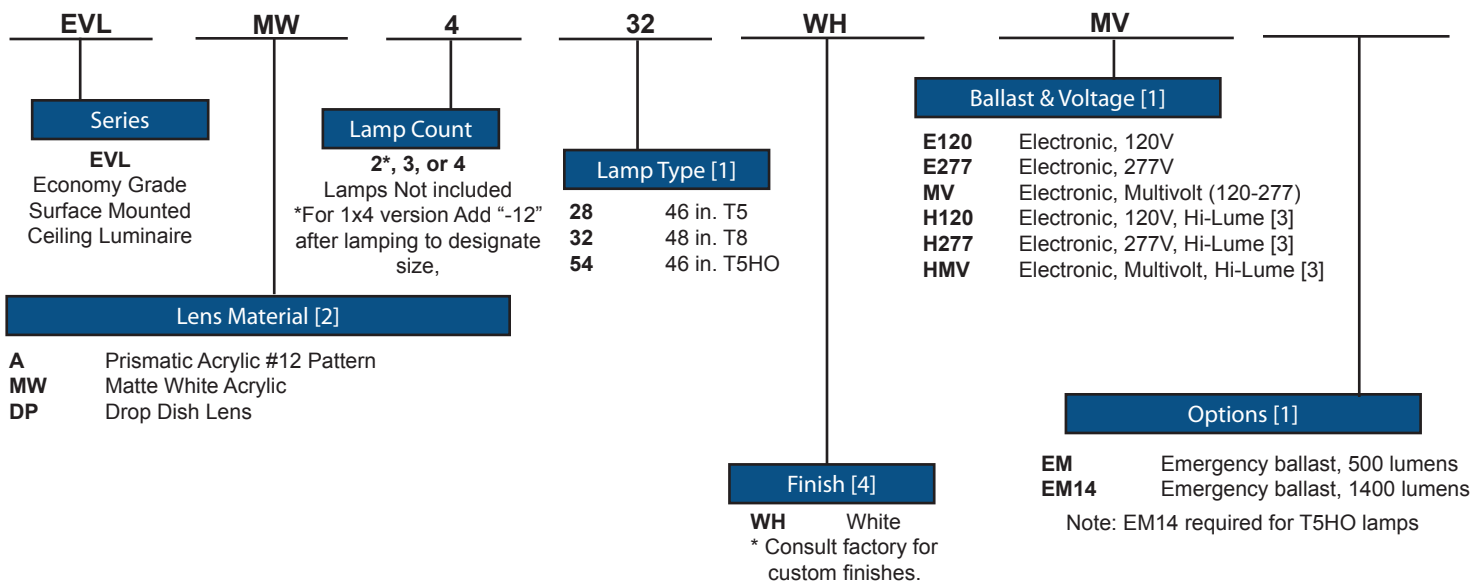
Emergency ballasts, Cord sets, whips, occupancy sensors Hanging kits, Wire guards. Contact factory for additional options.

### LISTING

Fixture & Ballast: UL Listed Ballast: Thermally protected, class P, HPF, Non PCB

## ORDERING INFORMATION

Example: EVLMW432WHMV



### Notes

- [1] See end of T02SURF for many additional lamps, ballasts, finishes, and options.  
[2] Custom louvers available in any cell configuration. Consult factory for additional information.  
[3] HiLume and LoLume ballasts available for T8 lamps only.  
[4] Consult factory for custom finishes.

Catalog Number:

Notes:

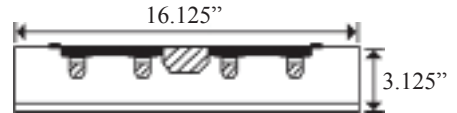
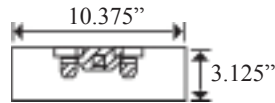
# EVL Series

Economy Grade, Surface  
Mounted Ceiling Luminaire



## DIMENSIONS

All dimensions are inches. Specifications subject to change without notice.



Catalog Number:
-----------------

Notes:
--------

Texas Fluorescents  
2055 Luna Rd. Suite 142 Carrollton, TX 75006  
Phone: 972-247-3171 Fax: 972-247-0200

www.texasfluorescents.com email: sales@texasfluorescents.com