

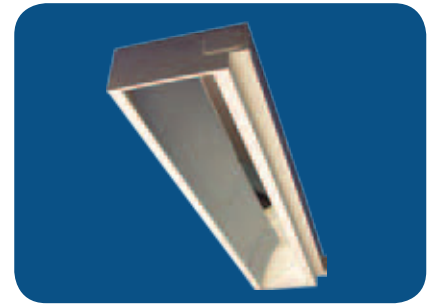


T E X A S

F L U O R E S C E N T S

EWW 2ft

Elliptical wall wash coffer
Grid mount



FEATURES & SPECIFICATIONS

INTENDED USE

Specification grade, recessed perimeter elliptical wall wash to highlight wall and shelf mounted goods in commercial and retail environments. Provides uniform VERTICAL surface lighting.

SIZE W x L x H in inches

- 10.62"W x 24"L x 4.5"D
- 10.62"W x 48.0"L x 4.5"D

MOUNTING

Recessed inverted T-Bar ceilings. Grid mount.

MATERIALS & FEATURES

Housing is die-formed and embossed code 22 gage steel. Finish is high reflectance baked white enamel. Access plate with wiring knockouts are provided on one side of housing. Ballast is accessed from side, through adjacent ceiling tile. Premium, full specular reflectors at sides and ends create a professional finish and control the wall wash lighting distribution.

- Perimeter highlight for wall and shelf mounted goods.
- ‘Silver’ full bright reflectors maximize efficiency, light output, and control wall wash distribution.
- Access plate to simplify installation

TYPICAL OPTIONS AND ACCESSORIES

Whips, fuses, and frame kits. See options page at the end of the T02Grid section, or contact factory for more details.



ORDERING INFORMATION

Example: EWW24LS12W1200LDMV40K

STANDARD

EWW	24L	S12W1200L	DMV	40K	
Series	Size	Wattage and Lumen	Driver	Color Temperature	
EWW Elliptical wall washer, Grid Mount	24L 24"	S12W1200L 12 System Watts, 1200 Delivered Lumens	MV Multi Volt 120-277V DMV 0-10V	30K 3000K 35K 3500K 40K 4000K 50K 5000K	
				Options	
				WP 6 ft. 3 wire 18 gauge whip WP10 6 ft. 4 wire 18 gauge whip	

HIGH OUTPUT

EWW	24L	H24W2550L	DMV	40K	
Series	Size	Wattage and Lumen	Driver	Color Temperature	
EWW Elliptical wall washer, Grid Mount	24L 24"	H24W2550L 24 System Watts, 2550 Delivered Lumens	MV Multi Volt 120-277V DMV 0-10V	30K 3000K 35K 3500K 40K 4000K 50K 5000K	
				Options	
				WP 6 ft. 3 wire 18 gauge whip WP10 6 ft. 4 wire 18 gauge whip	

Catalog Number:
Notes:

