

# Series OSL

## Outdoor Sign Lighter



### FEATURES & SPECIFICATIONS

#### INTENDED USE

Specification grade fixture, sealed aluminum extrusion with lens for outdoor applications. The OSL series is a durable fixture used in both parking and commercial / retail outdoor areas for sign and walkway lighting.

#### SIZE W x L x H in inches (mm)

5.25W x 3.06H (135 x 75)

Available in 48 and 96in nominal lengths. See dimensional view for actual size.

#### LAMP

1 or 2 lamp position.

#### MATERIALS & FEATURES

Aluminum extrusion with white interior and cast aluminum end plates. The diffuser / lens is a smooth clear acrylic. Available in 4 and 8 foot nominal lengths; single and tandem lamp configurations available with four foot lamps. Integral ballast for 54W T5HO lamp configurations; remote ballast for T12HO lamps. Integral junction box on one end of fixture permits wiring connection within enclosure.

- Fixtures may be coupled for continuous runs without additional accessories
- Sign lighters rotate up to 360 degrees

#### MOUNTING

Fixtures are typically mounted on conduit.

#### LISTING

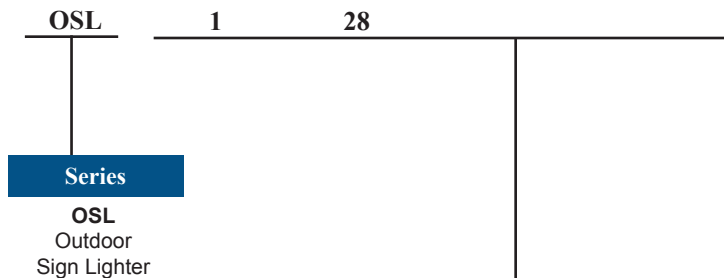
Fixture and Ballast: UL Listed.

Ballast: Thermally protected, class P, HPF, Non PCB.

#### TYPICAL OPTIONS AND ACCESSORIES

See options page at the end of the T02HARSH section, or contact factory for more details.

### ORDERING INFORMATION

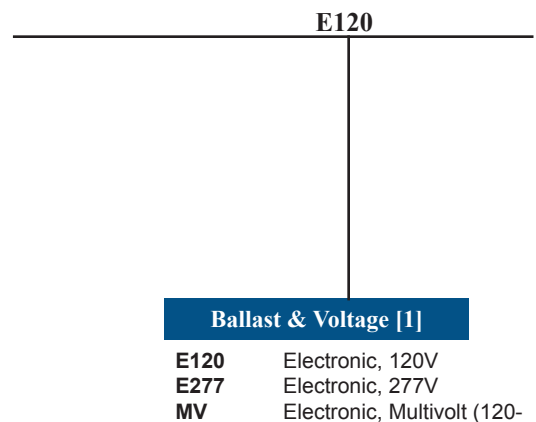


**Lamp Count      Lamp Type [1] & Tandem Code [2]**

1	28	48 in. T5 4 ft. nominal length
1 or 2	54	46 in. T5 4 ft. nominal length
1 or 2	54	8 46 in. T5HO Slimline      8ft. Tandem (2 lamp positions total)

T5HO Fixtures have INTEGRAL BALLAST  
Tandem fixture doubles total lamp count (2 or 4)

Example: OSL128E120



#### Notes

[1] See end of T02Harsh section for many additional lamps, ballasts, finishes, and options.

[2] Tandem doubles length and lamp count. Same lamps in cross section, additional lamps end to end.

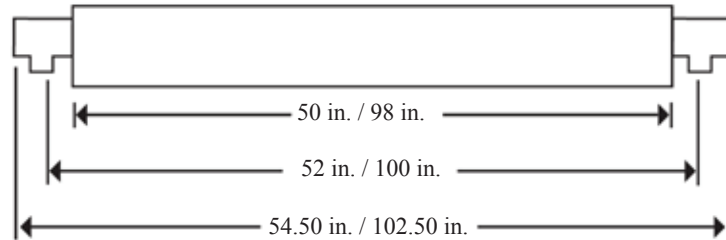
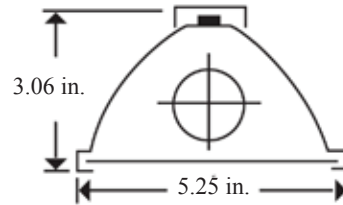
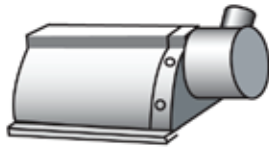
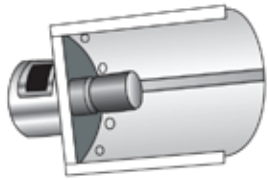
# Series OSL

Outdoor Sign Lighter



## DIMENSIONS

All dimensions are inches. Specifications subject to change without notice. The dimensions below represent the 2 ft. and the 4 ft.



Catalog Number:

Notes:

Texas Fluorescents  
2055 Luna Rd. Suite 142 Carrollton, TX 75006  
Phone: 972-247-3171 Fax: 972-247-0200

www.texasfluorescents.com email: sales@texasfluorescents.com