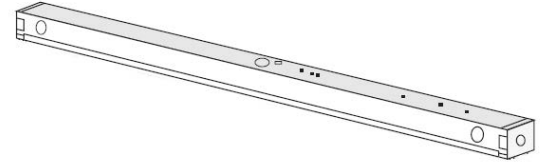


Series SE

LED Narrow Body Strip



FEATURES & SPECIFICATIONS

INTENDED USE

Narrow body strip for interior warehouse, retail, and utility areas requiring general illumination in a commercial quality narrow strip configuration.

SIZE W x L x H in inches (mm)

2.75W x 1.80H (70 x 45)

MATERIALS & FEATURES

Housing is die-formed and embossed code 22 gage steel. Finish is high reflectance baked white enamel. Wiring knockouts are provided on back, side, and end of housing. Ballast covers or reflectors attach without tools to simplify ballast access.

MOUNTING

Surface mount, chain hung, double stem. See end of chapter T02Strip for accessory mount kits.

ORDERING INFORMATION

STANDARD - 4FT

Example: SE48LS24W2800LDMV40K

SE	48L	S24W2800L		DMV	40K	
Series	Width	Wattage and Lumen	Reflectors	Driver	Kelvin Temperature	Options
SE	48L 48"	S24W2800L 24 System Watts, 2800 Delivered Lumens S28W3200L 28 System Watts, 3200 Delivered Lumens	Blank No Reflector W3 0 White Steel reflector Standard Mount	DMV 0-10V MV Multi - Volt 120V-277V	30K 3000K 35K 3500K 40K 4000K 50K 5000K	WP 6 ft. 3 wire 18 gauge whip WP10 6 ft. 4 wire 18 gauge whip

HIGH OUTPUT - 4FT

Example: SE48LH36W4100LDMV40K

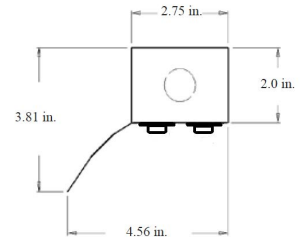
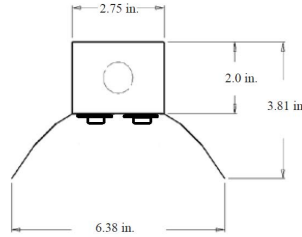
SE	48L	H36W4100L		DMV	40K	
Series	Width	Wattage and Lumen	Reflectors	Driver	Kelvin Temperature	Options
SE	48L 48"	H36W4100L 36 System Watts, 4100 Delivered Lumens	Blank No Reflector W3 0 White Steel reflector Standard Mount	DMV 0-10V MV Multi - Volt 120V-277V	30K 3000K 35K 3500K 40K 4000K 50K 5000K	WP 6 ft. 3 wire 18 gauge whip WP10 6 ft. 4 wire 18 gauge whip

* Consult for more options

Catalog Number:
Notes:

DIMENSIONS

All dimensions are inches. Specifications subject to change without notice.



ORDERING INFORMATION

STANDARD - 8FT

Example: SE96LS32W4050LDMV40K

SE	96L	S32W4050L		DMV	40K	
Series	Width	Wattage and Lumen	Reflectors	Driver	Kelvin Temperature	Options
SE	96L 96"	S32W4050L 32 System Watts, 4050 Delivered Lumens	Blank No Reflector W3 0 White Steel reflector Standard Mount	DMV 0-10V MV Multi - Volt 120V-277V	35K 3500K 40K 4000K	WP 6 ft. 3 wire 18 gauge whip WP10 6 ft. 4 wire 18 gauge whip
Narrow Body Strip, two row LEDs, with or without Reflectors						

HIGH OUTPUT - 8FT

Example: SE96LH72W8200LDMV40K

SE	96L	H72W8200L		DMV	40K	
Series	Width	Wattage and Lumen	Reflectors	Driver	Kelvin Temperature	Options
SE	96L 96"	H72W8200L 72 System Watts, 8200 Delivered Lumens	Blank No Reflector W3 0 White Steel reflector Standard Mount	DMV 0-10V MV Multi - Volt 120V-277V	30K 3000K 35K 3500K 40K 4000K 50K 5000K	WP 6 ft. 3 wire 18 gauge whip WP10 6 ft. 4 wire 18 gauge whip
Narrow Body Strip, two row LEDs, with or without Reflectors						

* Consult for more options

Catalog Number:
Notes: