



T E X A S

F L U O R E S C E N T S

SPS Series

4" x 4" Square Pole

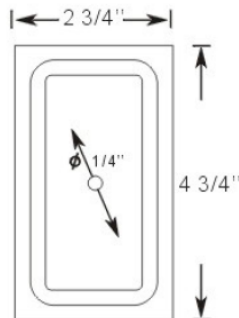
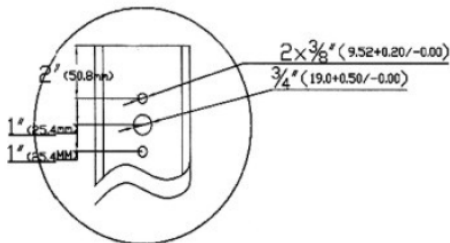
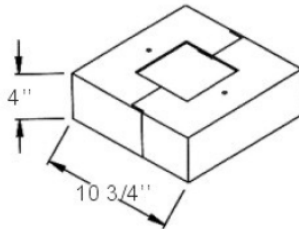
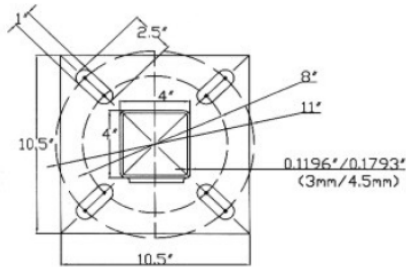


FEATURES & SPECIFICATIONS

- Fabricated from the Highest Grade Structural Steel Cast Iron on Selected Models
- Conforms to ASTM-A-500 Grade B: Minimum Yield Strength of 46,000 PSI
- Choice of Two Shaft Strengths:
 - Minimum Yield of 46,000 PSI
 - Minimum Yield of 55,000 PSI (Special Order)
- Polyester Powder-Coat Finish on Sandblasted Surface Chemical Treated to ensure Maximum Paint Adhesion. Baked at 400° to ensure Maximum Hardness and Durability
- Wall Thickness available in Gage 11 (.120") or Gage 7 (.180")
- Anchor Bolts (J-Bolts). Sold Separately

INCLUDED WITH POLE

- Polycarbonate (Lexan®) Spring Loaded Cover
- 12 Top Holes with Polycarbonate (Lexan®) Bushings
- Reinforced Cast Iron Hand-Hole with Ground Screw Included
- Easily Secured Base Cover
- Special Packing for Safe Shipping



* Consult for more options

SPS Series

5" x 5" Square Pole

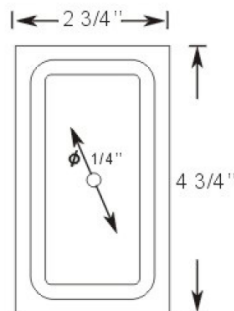
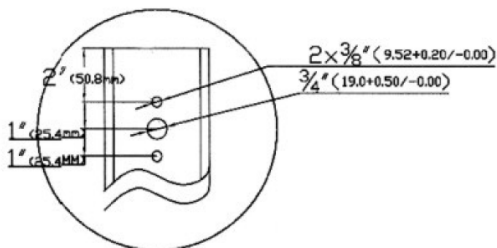
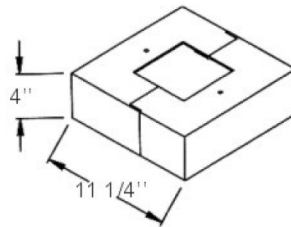
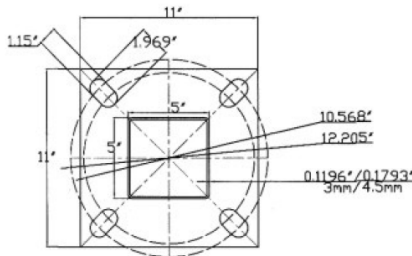
FEATURES & SPECIFICATIONS

- Fabricated from the Highest Grade Structural Steel Cast Iron on Selected Models
- Conforms to ASTM-A-500 Grade B: Minimum Yield Strength of 46,000 PSI
- Choice of Two Shaft Strengths:
 - Minimum Yield of 46,000 PSI
 - Minimum Yield of 55,000 PSI (Special Order)
- Polyester Powder-Coat Finish on Sandblasted Surface Chemical Treated to ensure Maximum Paint Adhesion. Baked at 400° to ensure Maximum Hardness and Durability
- Wall Thickness available in Gage 11 (.120") or Gage 7 (.180")
- Anchor Bolts (J-Bolts). Sold Separately



INCLUDED WITH POLE

- Polycarbonate (Lexan®) Spring Loaded Cover
- 12 Top Holes with Polycarbonate (Lexan®) Bushings
- Reinforced Cast Iron Hand-Hole with Ground Screw Included
- Easily Secured Base Cover
- Special Packing for Safe Shipping



* Consult for more options



T E X A S

F L U O R E S C E N T S

SPS Series

Square Pole

PART NUMBER (46,000 PSI)	Shaft Size	Gage	Base Plate Size	Bolt Circle	Bolt Size	Weight (LBS)	Wind Data (See Table Below)
SPS16411	16'	11	10.5"x10.5"X3/4"	9"-3/16"	3/4"X30"	126	1
SPS20411	20'	11	10.5"x10.5"X3/4"	9"-3/16"	3/4"X30"	146	2
SPS25411	25'	11	10.5"x10.5"X3/4"	12"-3/4"	1"X36"	176	3
SPS3057	30'	7	11"X 11"X 1"	12"X3/4"	1"X36"	406	4
SPS30511	30'	11	11"X 11"X 1"	12"X3/4"	1"X36"	290	5

* Consult for more options

Catalog Number:
Notes: