



### FEATURES & SPECIFICATIONS

#### INTENDED USE

Specification grade fixture, sealed aluminum extrusion with lens for outdoor applications. The OSL series is a durable fixture used in both parking and commercial / retail outdoor areas for sign and walkway lighting.

#### SIZE W x L x H in inches (mm)

5.25W x 3.06H (135 x 75)

Available in 48 and 96in nominal lengths. See dimensional view for

#### LAMP

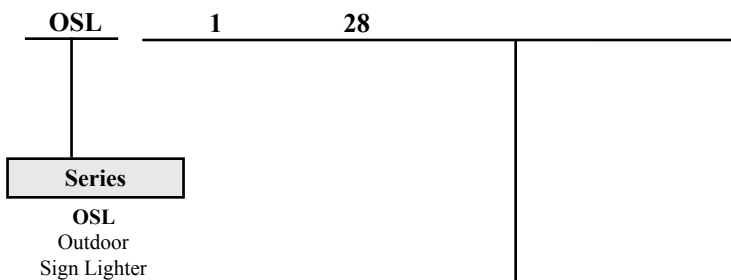
1 or 2 lamp position.

#### MATERIALS & FEATURES

Aluminum extrusion with white interior and cast aluminum end plates. The diffuser / lens is a smooth clear acrylic. Available in 4 and 8 foot nominal lengths; single and tandem lamp configurations available with four foot lamps. Integral ballast for 54W T5HO lamp configurations; remote ballast for T12HO lamps. Integral junction box on one end of fixture permits wiring connection within enclosure.

- Fixtures may be coupled for continuous runs without additional accessories
- Sign lighters rotate up to 360 degrees

### ORDERING INFORMATION



Lamp Count	Lamp Type [1] & Tandem Code [2]	
1	28	48 in. T8 4 ft. nominal length
1 or 2	54	46 in. T5 4 ft. nominal length
1 or 2	54      8	46 in. T5HO Slimline    8ft. Tandem (2 lamp positions total)
T5HO Fixtures have INTEGRAL BALLAST Tandem fixture doubles total lamp count (2 or 4)		
1	F48T12HO	48 in. T12HO 4 ft. nominal length
1	F96T12HO	96 in. T12HO 8 ft. nominal length
T12HO Fixtures have REMOTE BALLAST Tandem fixture doubles total lamp count (2 or 4)		
<b>Tandem fixture doubles total lamp count (2 or 4)</b>		

#### MOUNTING

Fixtures are typically mounted on conduit.

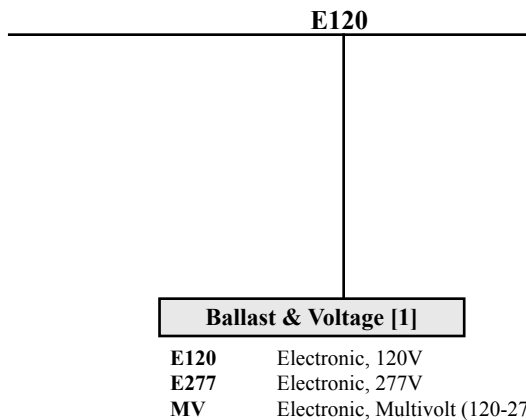
#### LISTING

Fixture: UL Listed for Wet Locations.  
 Ballast: Thermally protected, class P, HPF, Non PCB. UL Listed.

#### TYPICAL OPTIONS AND ACCESSORIES

See options page at the end of the T02HARSH section, or contact factory for more details.

Example: OSL128E120



#### Notes

- [1] See end of T02Harsh section for many additional lamps, ballasts, finishes, and options.  
 [2] Tandem doubles length and lamp count. Same lamps in cross section, additional lamps end to end.

Catalog Number:
Notes:

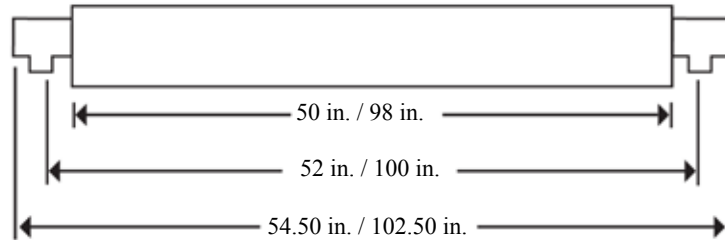
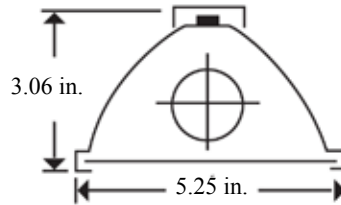
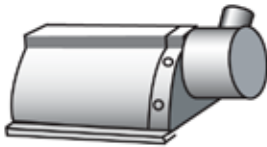
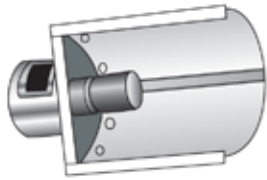
# Series OSL

## Outdoor Sign Lighter



### DIMENSIONS

All dimensions are inches. Specifications subject to change without notice. The dimensions below represent the 2 ft. and the 4 ft.



Catalog Number:
Notes: